

Telling Your Story with Data

Presented by:
John Rome

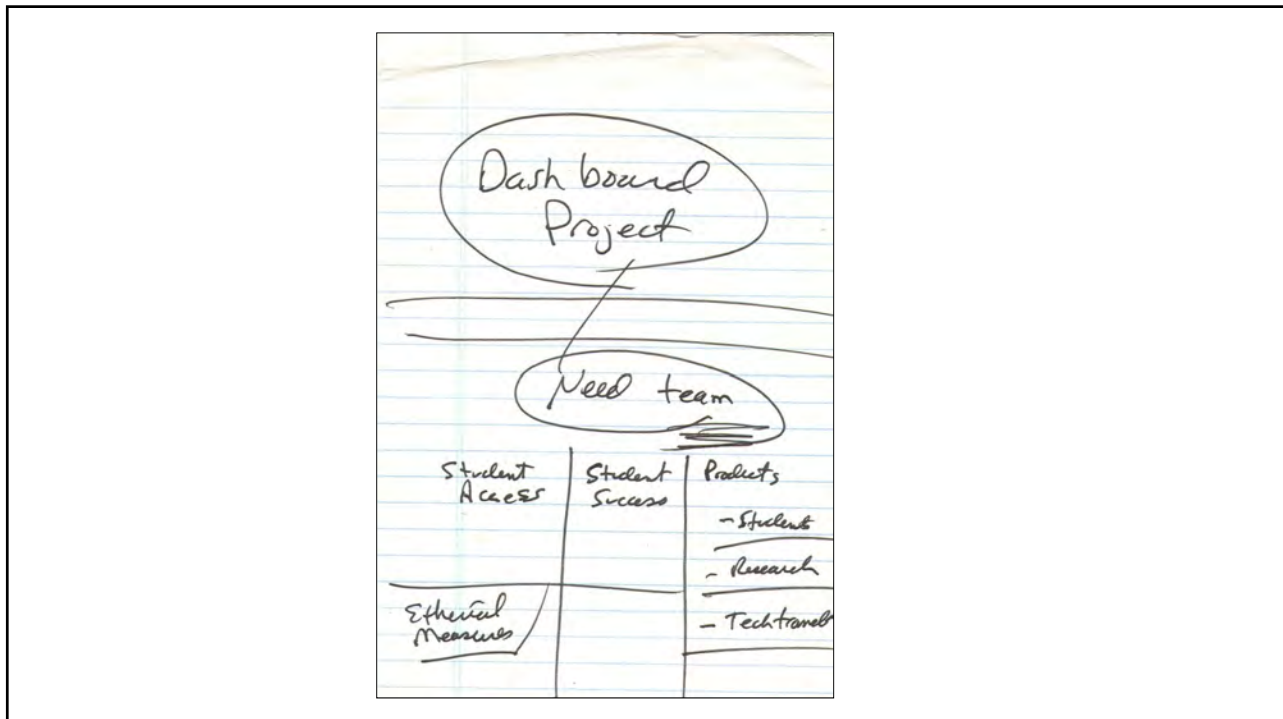
Sessions

20 minutes	Presentation
10 minutes	Q&A
15 minutes	Interactive Breakout Rooms

THE FALVEY MEMORIAL LIBRARY
VILLANOVA UNIVERSITY

PAGE 1

CALL NUMBER	ACC NO	BORROWER'S NAME	WH OR DEPT	TRANS NO	DUE DATE	LUC
CR 3664 P3	150519			000319	1/19/68	F
SF 0697-467	179659		LAW	000852	2/22/68	F
AC 0001 35	022678			02871	001208	2/08/68
W 1-10 5915	115449			71025	001059	2/02/68
B L.D 278713	112904			71025	001061	2/02/68
B 327.9 H92C3	133526				001303	2/02/68
B 693 2763	114497			71025	001062	2/02/68
B 693 2715V1	182296			71025	001058	2/02/68
B 693 2715V2	182297			71025	001060	2/02/68
B 819 527	186402				001384	2/07/68
B 819 534536	189044				001382	2/07/68
B 0072 C5298	180313		33650	000676	1/20/68	
B 0132 Y6653	179390		THEO	001159	2/05/68	S
B 0132 Y695	194692		THEO	001140	2/05/68	S
B 0731 534	173173			92297	001145	2/08/68
B 1191 952	195030			60621	001008	2/02/68
B 1835 1897	129471			OTHER	000211	1/17/68
B 1835 1897	129472			OTHER	000212	1/17/68
B 1835 1897	129483			OTHER	000213	1/17/68
B 1853 E5V4	031974			LIB	000243	2/07/68
B 1853 E535	180120			LIB	000245	2/07/68
B 187 1928V2	183146		DEAN		000286	1/19/68
B 2430 1354CV	164319				000896	1/12/68
B 2430 H254G3	183886				000896	1/12/68
B 2430 0378553	160023				000881	1/12/68
B 2430 53406	183881		PHIL	000189	2/05/68	F
B 2430 12442	182808		PHIL	000189	2/05/68	F
B 2430 13794 PRM1	187312		PHIL	000454	2/25/68	F
B 2430 13794 PRM2	187307		PHIL	001333	2/25/68	F
B 429 3036	193411		PHIL	003548	2/23/68	F
B 3279 H94P29	196554		OTHER	001128	2/05/68	D
B 3279 H9265	191098		OTHER	001127	2/05/68	D
B 3303 H7605	183266			16418	001208	2/05/68
B 3376 H502P53	180076			14736	000431	1/24/68
B 395 C4V1	144130			14736	000430	1/24/68
B 399 F1523V1	117682				000678	1/24/68
B 399 837	170757				000607	2/19/68
B 436 A546C1	189894		PHIL		000857	1/12/68
B 436 085	130640		PHIL	000844	2/05/68	F
B 455 272019V3	095126		33650	000673	1/30/68	
B 79 C4206	160518			000883	1/12/68	R
B 721 GA33	026333				001331	2/21/68
B 753 G454	145108		PHIL	000490	2/20/68	F
B 765 T94C33	164427		PHIL	000496	2/20/68	F
B 765 15553	191354		PHIL	000325	1/19/68	F
B 802 C6	123506			000225	1/15/68	
B 819 825	083360			531	000880	1/12/68
B 819 5272	126530					



ASU Dashboards

ASU Home My ASU Colleges & Schools Map & Locations Directory John SIGN OUT

- GENERAL
 - Admission Services
 - Administrative System Access
 - AECP Migration
 - ASU Staff Training
 - Benefit Reporting
 - Budget Position Control
 - Course Enrollment Management
 - Enrollment Tracking
 - Faculty
 - Financial (Super Report)
 - Global Launch Migration
 - Human Resources
 - Payroll
 - Personnel Transaction Requests
 - Research
 - Retention
 - Sponsored Effort Reporting
 - Transfer Pathway Programs
 - Travel
- COLLEGE/SCHOOL
 - Academic Program Profile
 - eAdvisor™
 - Prereq Review/Drop
 - Online Retention Report

DASHBOARDS

Visualize > Analyze > Strategize

dashboard.asu.edu Play

Note: Please use Google Chrome or Internet Explorer to work with ASU dashboards. Recent versions of Firefox are having problems with some dashboards.

What are ASU Dashboards?

A *dashboard* is a web interface for users that organizes and presents information in a way that is easy to read and interpret. Dashboards are meant to provide visibility into key performance indicators (KPIs) – through simple visual graphics such as gauges, charts and tables within a web browser – of information most important to the institution. The information is intended to be simple to monitor at a glance and, where appropriate, actionable. Ultimately, dashboards are created to provide a unique and powerful means to present information about any range of topics. In many respects, a reporting dashboard can be likened to a dashboard in an automobile. It provides an "at-a-glance view" of the current operational state of the vehicle.

Notifications and Alerts NEW

If you would like to get important information about the Dashboards, please click on the following link to see how you can opt-in to the listserv just for Dashboard users like yourself.

[Dashboard Listserv](#)

How do I get access to Dashboards?

We grant access to specific dashboards or by data warehouse user groups. Click the button below to view the matrix to determine which dashboard you have access to or the best way to request new ones.

REQUEST ACCESS

Using Dashboards

Go to My Reports homepage

See video
Introduction to Dashboards
(Approx 2:30 mins)

View Dashboard Descriptions

Submit a Ticket

Super Report

(Back ASU Headers)

Fiscal Year: 2009 Months: 8 Type: (All) Status: Search By: Account XJ1 Go

Account search for XJ1

Legend (hover over dot for details): ● = Possible Problem ● = Caution

Type	Account	Description	Account Manager	Lead Investigator	Start Date	End Date	Ends In (months)	Available Balance
State	XJ	UNIVERSITY LOGY OFFICE	Briner		7/1/08	6/30/09	5	110,328.32
State	XJ	ADVISORY LOGY OFFICE	Briner		7/1/08	6/30/09	5	(992.76)
State	XJ	CLERK EMPMENT			7/1/08	6/30/09	5	0.00
State	XJ	UTILITY	Briner		7/1/08	6/30/09	5	0.00
State	XJ	CLERK			7/1/08	6/30/09	5	0.00
State	XJ	FIS OPERATIONS	Briner		7/1/08	6/30/09	5	(55,225.47)
State	XJ	UTILITY (OFT)	Briner		7/1/08	6/30/09	5	42,200.00
State	XJ	UNIVERSITY LOGY OFFICE	Briner		7/1/08	6/30/09	5	40,267.08
State	XJ	STUDENT BY	Briner		7/1/08	6/30/09	5	346,696.71
State	XJ	CUSTOMER			6/30/09	6/30/09	5	0.16
State	XJ	INFORMATION			6/30/09	6/30/09	5	163,103.67
State	XJ	CUSTOMER			6/30/09	6/30/09	5	49,074.36
State	XJ	CC			6/30/09	6/30/09	5	445,060.70
State	XJ	CC			6/30/09	6/30/09	5	141,637.14
State	XJ	CC			6/30/09	6/30/09	5	(15,260.37)
State	XJ	CC			7/1/08	6/30/09	5	80,051.60
State	XJ	CC CONSULTING	Briner		7/1/08	6/30/09	5	(72,660.00)
State	XJ	SUM	Briner		7/1/08	6/30/09	5	8,961.63
State	XJ	US	Briner		7/1/08	6/30/09	5	480.04
State	XJ	CAMPUS DESKTOP	Briner		7/1/08	6/30/09	5	(5,504.00)
State	XJ	UTILITY NG TECH INST	Briner		7/1/08	6/30/09	5	192,836.95
State	XJ	ALTERNATIVE NOLOGIES	Briner		7/1/08	6/30/09	5	60,837.66
State	XJ	ALTERNATIVE DIO	Briner		7/1/08	6/30/09	5	2,868.32
State	XJ	ALTERNATIVE SYSTEMS	Briner		7/1/08	6/30/09	5	10,701.95
State	XJ	ALTERNATIVE INTEGRATION	Briner		7/1/08	6/30/09	5	31,502.38
State	XJ	ALTERNATIVE REACH	Briner		7/1/08	6/30/09	5	49,867.62
State	XJ	UTILITY NCES	Briner		7/1/08	6/30/09	5	1,505.89
State	XJ	UTILITY GEMENT	Briner		7/1/08	6/30/09	5	127,618.46
State	XJ	UTILITY NS	Briner		7/1/08	6/30/09	5	10,358.79
State	XJ	UTILITY A SERVICES	Briner		7/1/08	6/30/09	5	57,765.94

XJ11015 Burn Rate

Time elapsed = 65.0%

Money used = 79.9%

From ASU's Financial Dashboard

Retention Dashboard

Retention Indicators

What's New? Oct 6th, 2017

Data Refresh
05/14/20 5AM

Related Links

- Fall 2017-to-Fall 2018 Weekly Retention Report
- Fall 2017-to-Fall 2018 FTTF by College and Department
- Veterans Fall 2017-to-Fall 2018 Weekly Retention Report
- Fall 2017-to-Spring 2018 Weekly Retention Report
- Fall 2017-to-Spring 2018 FTTF by College and Department
- Veterans Fall 2017-to-Spring 2018 Weekly Retention Report
- Retention Tracking Report
- Indicators Dictionary
- Dashboard Logic (SQL)

ASU Dashboards

Dashboard Main

Student Profile Search (Name or Emplid or ASURITE)

Spring 20 Population: Enrolled | Spring 20 Cohorts | ALL | Indicators: ALL

Campus: ALL | College: ALL | Majors: ALL | Advisor Code

Residency Community: ALL | Hall: ALL

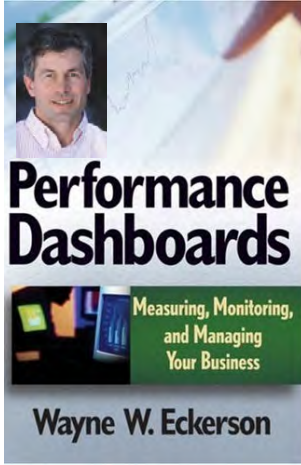
GO **RESET** **MORE OPTIONS**

College Summary | Student Detail | Student Profile

Indicators (out of 12)

Colleges	No Indicators *	1	2	3	4+	At Risk *	% At Risk-	Total Students *
Integrative Sciences and Arts	1,781	2,122	1,557	792	1,243	5,714	76%	7,495
Nursing and Health Innovation	959	1,299	798	325	286	2,708	74%	3,667
Global Management	133	135	106	56	71	368	73%	501
Teachers College	821	1,111	478	189	224	2,002	71%	2,823
New College	1,688	1,742	989	469	571	3,771	65%	5,459
Public Service & Community Solution	1,532	1,469	1,032	401	429	3,331	65%	4,863
Engineering	5,863	5,560	3,044	1,238	1,505	11,347	66%	17,210
Journalism	723	651	384	158	185	1,378	66%	2,101
Liberal Arts and Sciences	7,828	7,155	3,802	1,895	2,334	15,186	66%	23,014
Health Solutions	1,964	1,820	863	389	532	3,604	65%	5,568
Sustainability	236	213	112	45	43	413	64%	649
Design and the Arts	1,715	1,517	627	294	417	2,855	62%	4,570
Business	5,498	4,431	2,192	967	1,082	8,672	61%	14,170
Provost	49	58	12	3	2	75	60%	124
Future of Innovation in Society	21	12	7	5	6	30	59%	51
Total	30,811	29,295	16,003	7,226	8,930	61,454	67%	92,265

From ASU's Retention Dashboard



Performance Dashboards

Measuring, Monitoring, and Managing Your Business

Wayne W. Eckerson

ASU Home | My ASU | Colleges & Schools | Map & Locations | Directory | John | SIGN OUT

ASU ARIZONA STATE UNIVERSITY

ASU Dashboards

Dashboard Information

SUMMARY

- Access List
- Dashboard 360
- Dashboard JNDI
- Dashboard SQL
- Page Stats
- Page 360
- Peak Usage
- Recent Usage
- User Profile

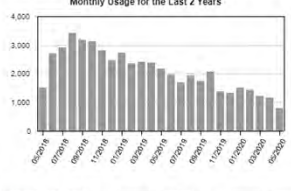
ASU Dashboards

- Dashboard Main
- Help Center
- Submit a Ticket
- Feedback

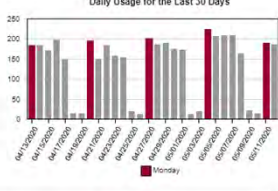
Usage Over Time

Usage Type: Hits Users

Monthly Usage for the Last 2 Years



Daily Usage for the Last 30 Days



View Data From: 4/13/2020 To: 5/13/2020

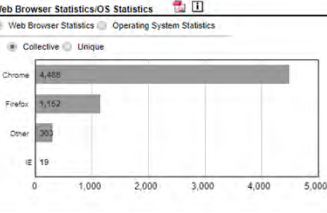
Dashboard Statistics

Dashboard	Hits
1. Retention	2,774
2. EmployeeList	889
3. Admissions	412
4. PersonnelTransactionRequests	388
5. ASUStaffTraining	271
6. SuperReport	229
7. Faculty	200
8. PrerequisiteReview	193
9. CourseEnrollmentManagement	133
10. BenefitReporting	109
Total	5,894

Web Browser Statistics-OS Statistics

Web Browser Statistics | Operating System Statistics

Collective | Unique



5



Designing Dashboards To Die For

John Rome
Associate Vice President, University Technology Office
Arizona State University (ASU)



Designing Dashboards to Die For

Session #26637
March 23, 2009



Anaheim, California

TDWI BI EXECUTIVE SUMMIT

Designing Dashboards to Die For...

John Rome
Associate Vice President, Arizona State University
Monday, August 3rd, 2009





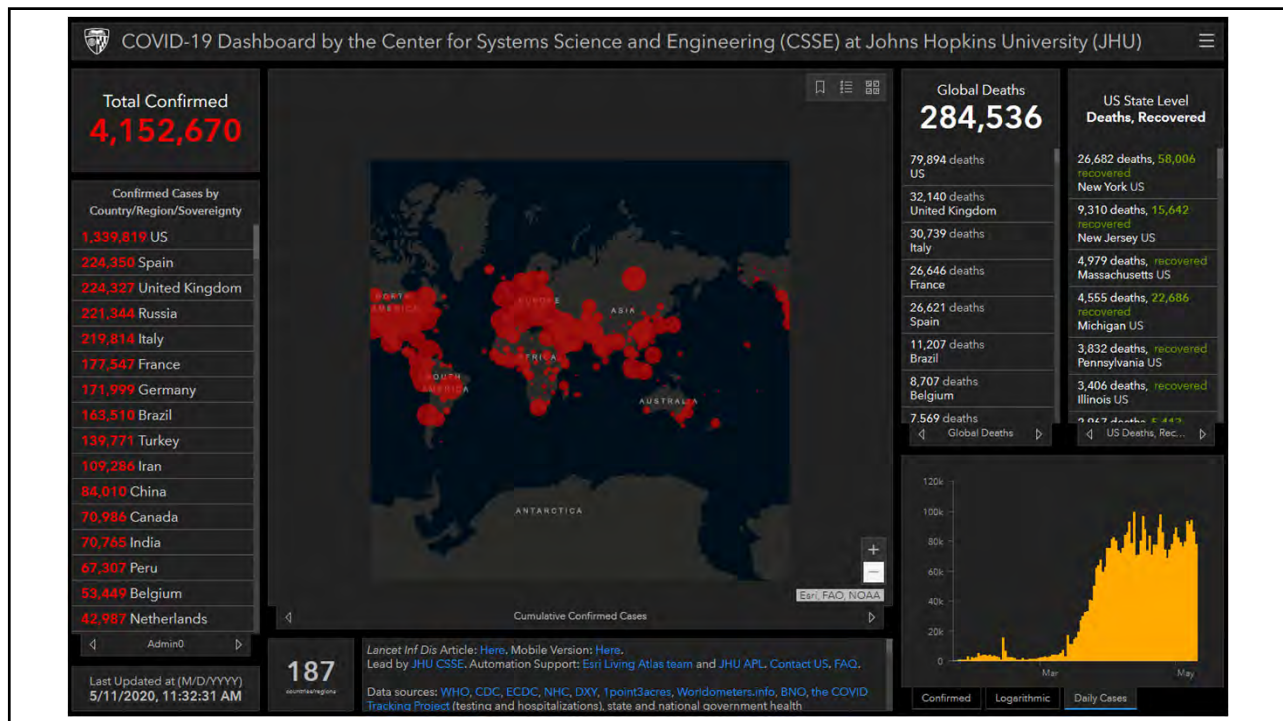
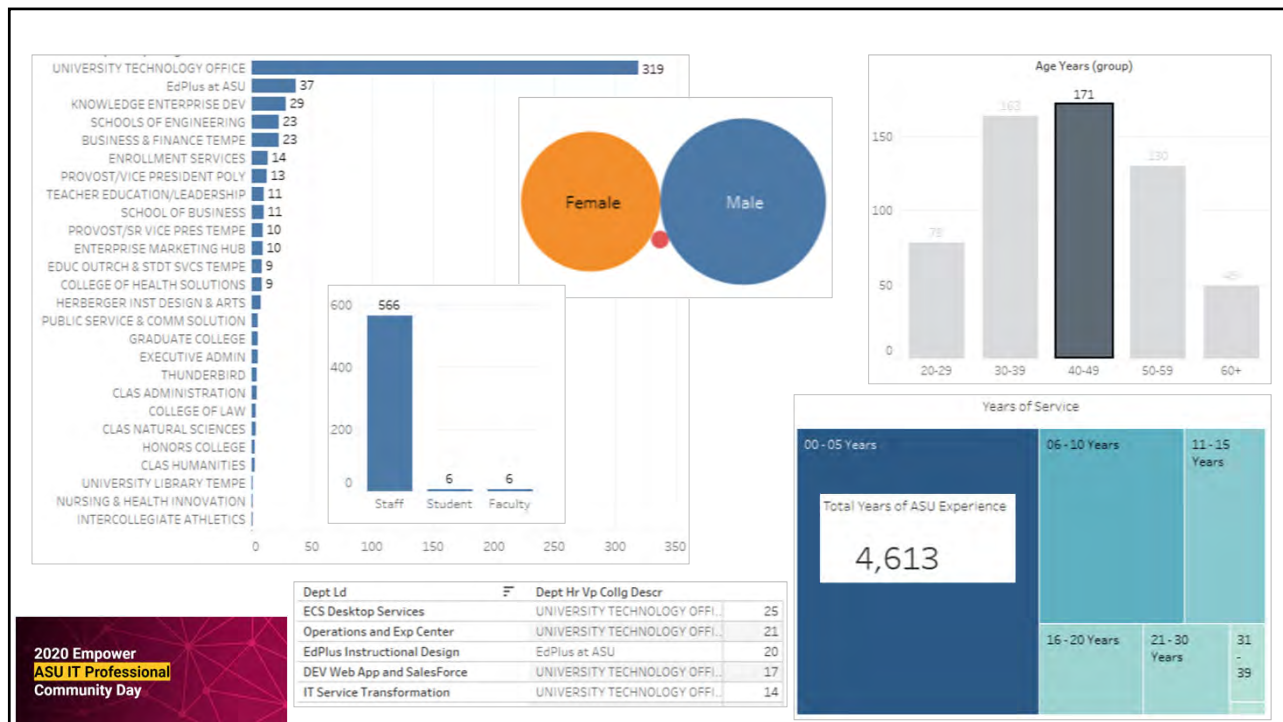
Designing Dashboards to Die For...

John Rome
Arizona State University
Higher Education Data Warehousing Forum, 2009

Empower Registrant List 05/12/2020 - Excel

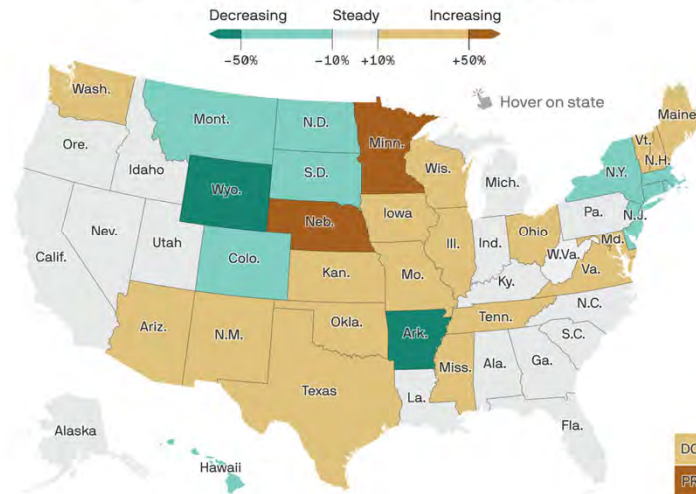
	J	K	L	M	N	O
1	Title	Population	Dept Ld	Home Dept Descr	Dept Hr Vp Collg Descr	Deptid
2	Asst Dir Info Technology	Staff	Engineering Technical Services	Engineering Technical Services	SCHOOLS OF ENGINEERING	B1305
3	Instructionl Tech Analyst (IT)	Staff	LE Classroom Operations UTOP	LE Classroom Operations UTOP	UNIVERSITY TECHNOLOGY OFFICE	U0301182
4	Manager of Data Integrity	Staff	CP-Alumni Engagement & Impact	CP-Alumni Engagement & Impact	ENTERPRISE MARKETING HUB	S0102001
5	Dir Information Technology Svc	Staff	LE Classroom Operations	LE Classroom Operations	UNIVERSITY TECHNOLOGY OFFICE	U0118003
6	Mgr Information Technology	Staff	IT Service Transformation	IT Service Transformation	UNIVERSITY TECHNOLOGY OFFICE	U0102010
7	Director of Budget & Forecasting	Staff	University Technology Office	University Technology Office	UNIVERSITY TECHNOLOGY OFFICE	U0101
8	Dir Sys Infrastctr & Securty	Staff	Technology Services	Technology Services	PROVOST/VICE PRESIDENT POLY	I0702
9	Business Analyst Sr	Staff	University Registrar Services	University Registrar Services	ENROLLMENT SERVICES	B0120
10	Database Analyst Sr (IT)	Staff	CANES Database & ERP Services	CANES Database & ERP Services	UNIVERSITY TECHNOLOGY OFFICE	U0102003
11	Tech Support Analyst	Staff	Technology Services	Technology Services	PROVOST/VICE PRESIDENT POLY	I0702
12	Business Intelligence Dvlpr Sr	Staff	DI Data Analytics	DI Data Analytics	UNIVERSITY TECHNOLOGY OFFICE	U0116004
13	Executive Director, Strategic Fina	Staff	Strategic Finance & Bus Office	Strategic Finance & Bus Office	UNIVERSITY TECHNOLOGY OFFICE	U0104
14	Manager, Information Technology	Staff	Enterprise Marketing Hub	Enterprise Marketing Hub	ENTERPRISE MARKETING HUB	S0101
15	Business Analyst Sr	Staff	GPIS Identity & Access Mgmt	GPIS Identity & Access Mgmt	UNIVERSITY TECHNOLOGY OFFICE	U0109001
16	Mgr Instructional Design	Staff	EdPlus Instructional Design	EdPlus Instructional Design	EdPlus at ASU	R0104001
17	Instructional Designer	Staff	Office Digital Learning MLFTC	Office Digital Learning MLFTC	TEACHER EDUCATION/LEADERSHIP	G0614
18	Sr Systems Programmer	Staff	CANES Adv Network Eng Svc	CANES Adv Network Eng Svc	UNIVERSITY TECHNOLOGY OFFICE	U0102004
19	Systems Analyst Prin	Staff	SIO Bus Support & Qual Assur	SIO Bus Support & Qual Assur	UNIVERSITY TECHNOLOGY OFFICE	U0105006
20	Dir Information Technology Svc	Staff	Operations and Exp Center	Operations and Exp Center	UNIVERSITY TECHNOLOGY OFFICE	U0103003
21	Dir Teaching/Learning Tech	Staff	College Of Lib Arts & Sciences	College Of Lib Arts & Sciences	CLAS ADMINISTRATION	B1701
22	Project Mgr/ Sys Architect IT	Staff	CANES Identity Management Engr	CANES Identity Management Engr	UNIVERSITY TECHNOLOGY OFFICE	U0102002
23	Assoc Research Profsnl (FSC)	Faculty	English	English	CLAS HUMANITIES	B1705
24	Program Coordinator Sr	Staff	HR Programs	HR Programs	BUSINESS & FINANCE TEMPE	D0501004
25	Agile Iteration Manager	Staff	SIO Project Management	SIO Project Management	UNIVERSITY TECHNOLOGY OFFICE	U0105008
26	Asst Dir Info Technology	Staff	Engineering Technical Services	Engineering Technical Services	SCHOOLS OF ENGINEERING	B1305
27	IPT Data Analyst	Staff	School Of Social Work	School Of Social Work	PUBLIC SERVICE & COMM SOLUTION	M0704
28	Research Software Engineer	Staff	Lunar Recon Orbiter Sci Ops Cn	Lunar Recon Orbiter Sci Ops Cn	CLAS NATURAL SCIENCES	B1702002
29	Director	Staff	University Affairs 2	University Affairs 2	EXECUTIVE ADMIN	A0102004

Thanks Bob Sookvong for the Data!



Change in new COVID-19 cases in the past week

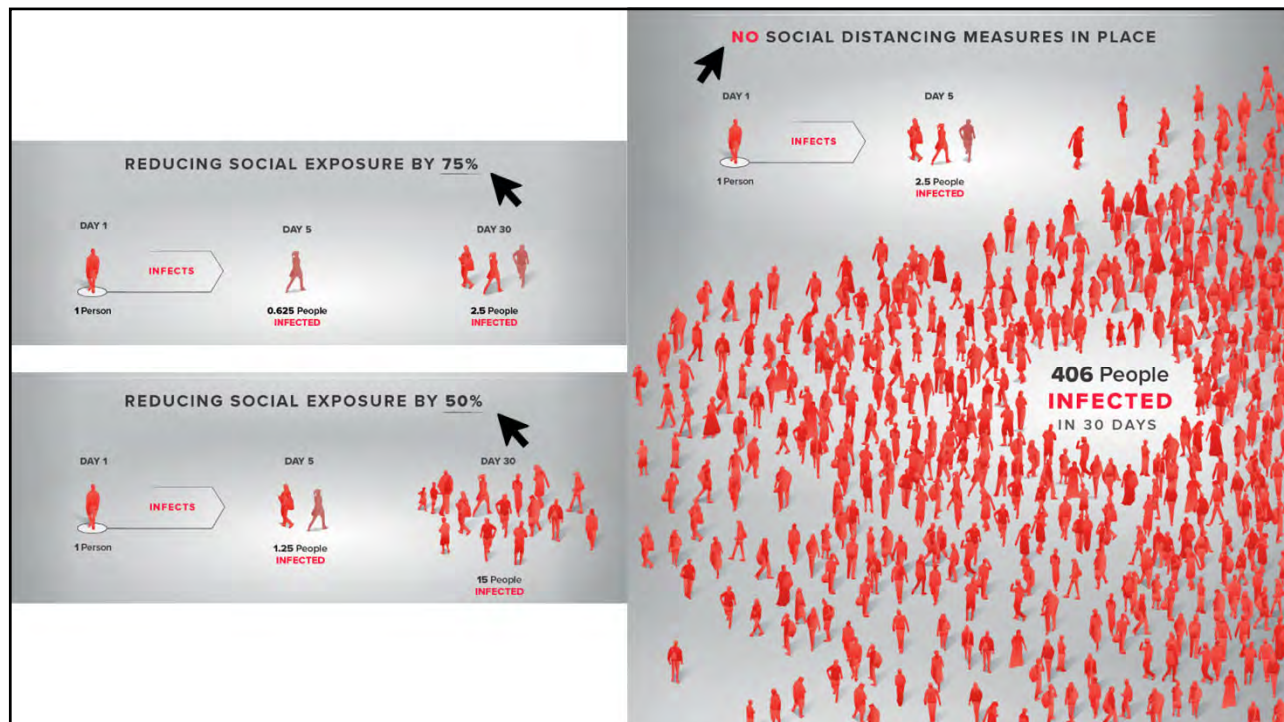
Percent change of the 7-day average of new cases on April 27 and May 4, 2020



Data: [The Center for Systems Science and Engineering at Johns Hopkins](#), U.S. Census Bureau. Map: Andrew Witherspoon/Axios

Breakdown by state

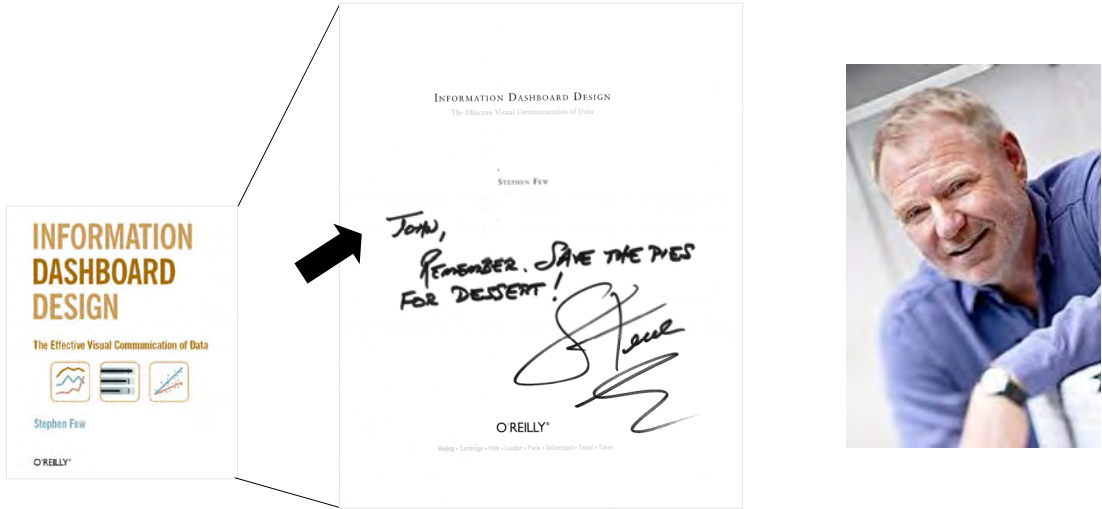
STATE	Cases		Deaths	
	TOTAL	PER 100K PEOPLE	TOTAL	PER 100K PEOPLE
TOTAL	1,347,760	411	79,771	24
New York	345,478	1,776	26,656	137
New Jersey	139,945	1,576	9,310	105
Massachusetts	77,793	1,129	4,979	72
Illinois	77,741	613	3,406	27
California	67,949	172	2,719	7
Pennsylvania	60,325	471	3,828	30
Michigan	47,138	472	4,551	46
Florida	40,982	191	1,735	8
Texas	39,836	137	1,120	4
Georgia	33,833	319	1,405	13



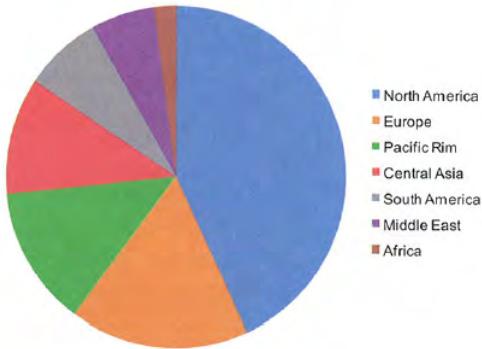
7 Visualization Tips to Tell Your Story

- Save your Pies for Dessert
- Resist Revving you Engines
- NO, NO, NO to 3-D
- Pay Attention to Pre-Attentive Attributes
- Initiate Infographics
- KPI Placement is Key
- Word Clouds are the New Mullets

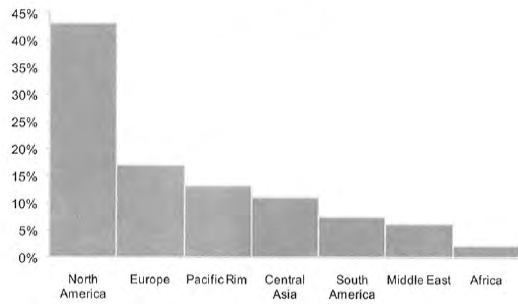
#1 Save Your Pies for Dessert




Total Sales by Region




Total Sales by Region



What People Call Me




- Space Cowboy
- Ganster of Love
- Maurice



... || GraphJam

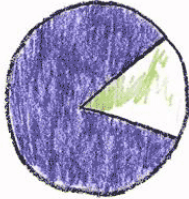
What I Am



- Picker
- Grinner
- Lover
- Sinner
- Joker
- Smoker
- Midnight Toker

GraphJam

Percentage of 5 year olds who think Crayons are:



- Fun to color with
- Delicious

... || GraphJam.com

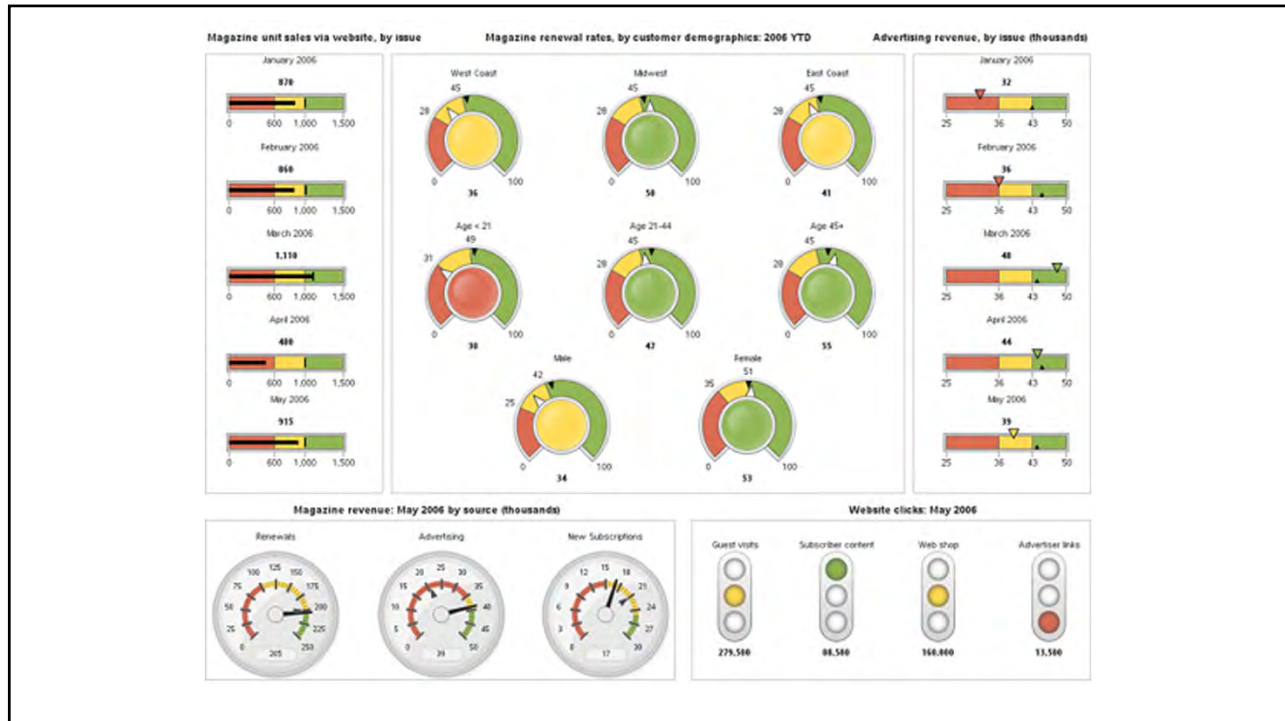
#2 Resist Revving Your Engines



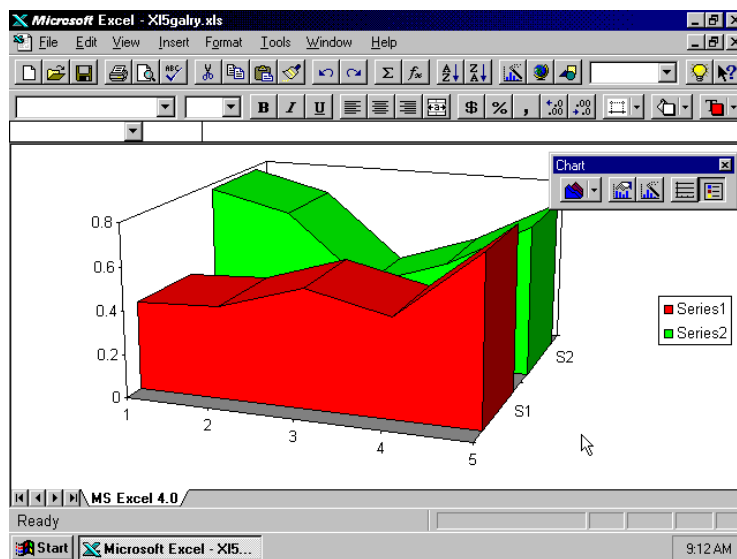


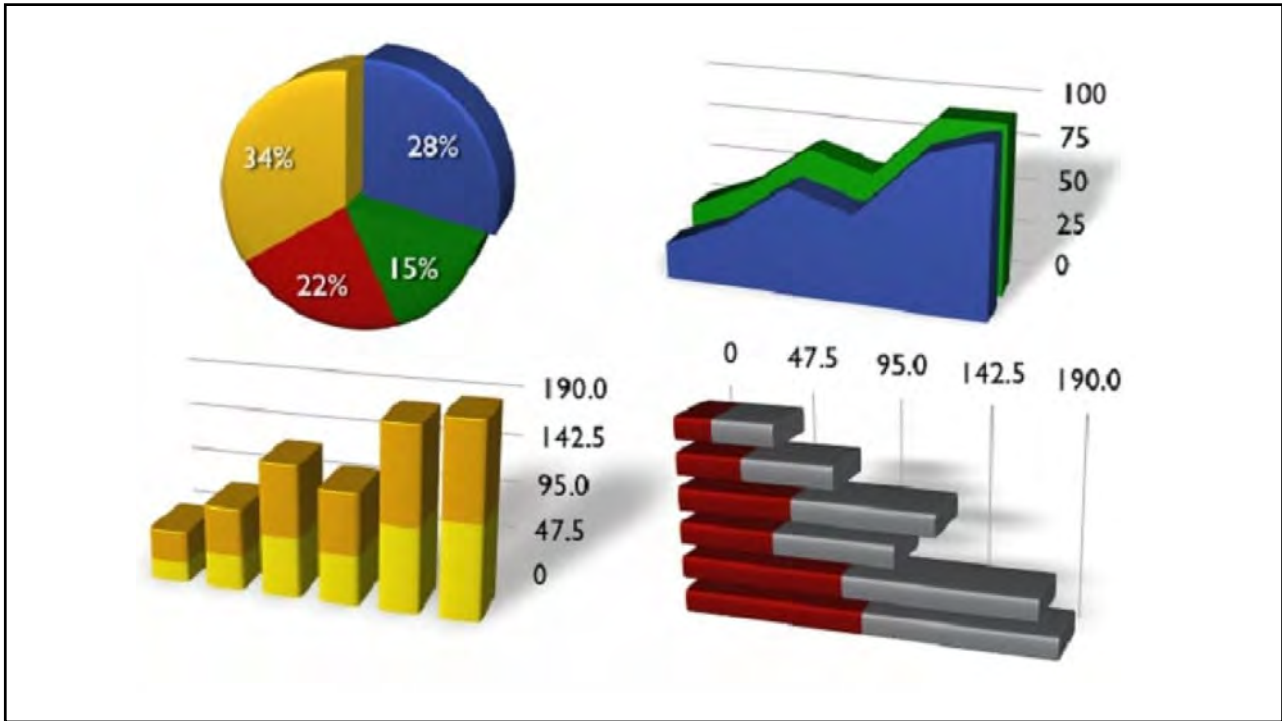
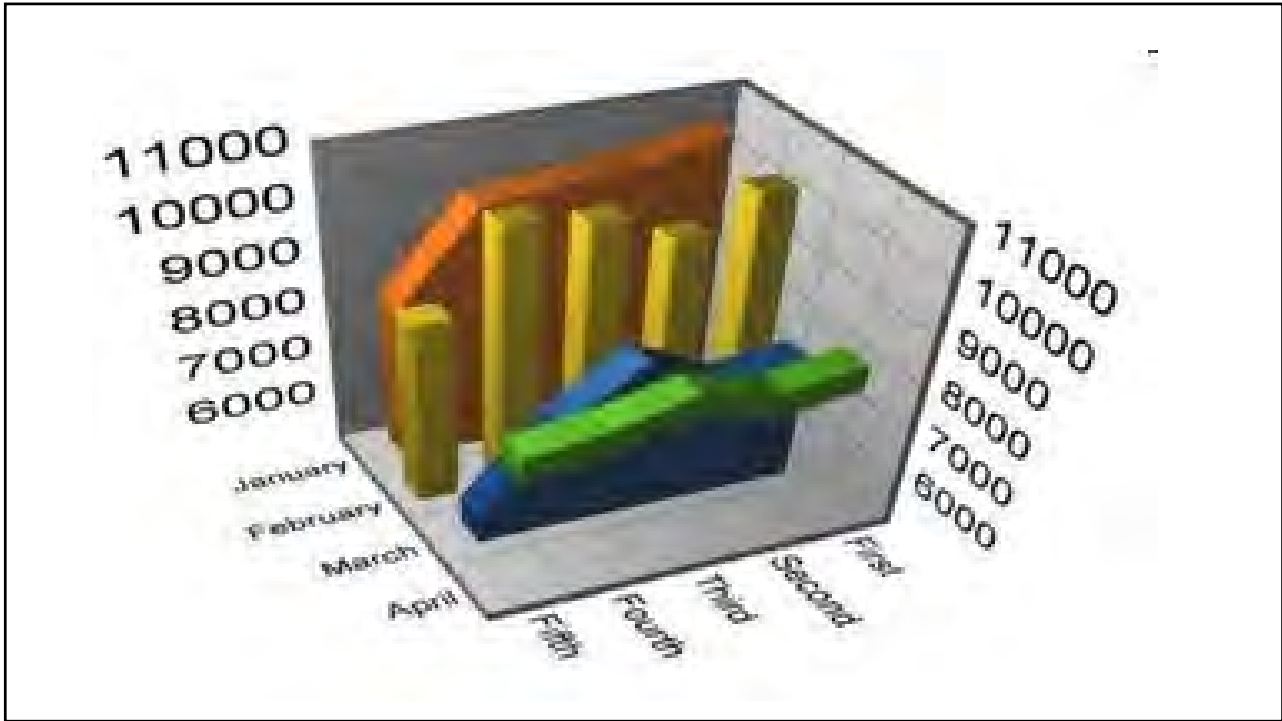
(click on image for a larger view)

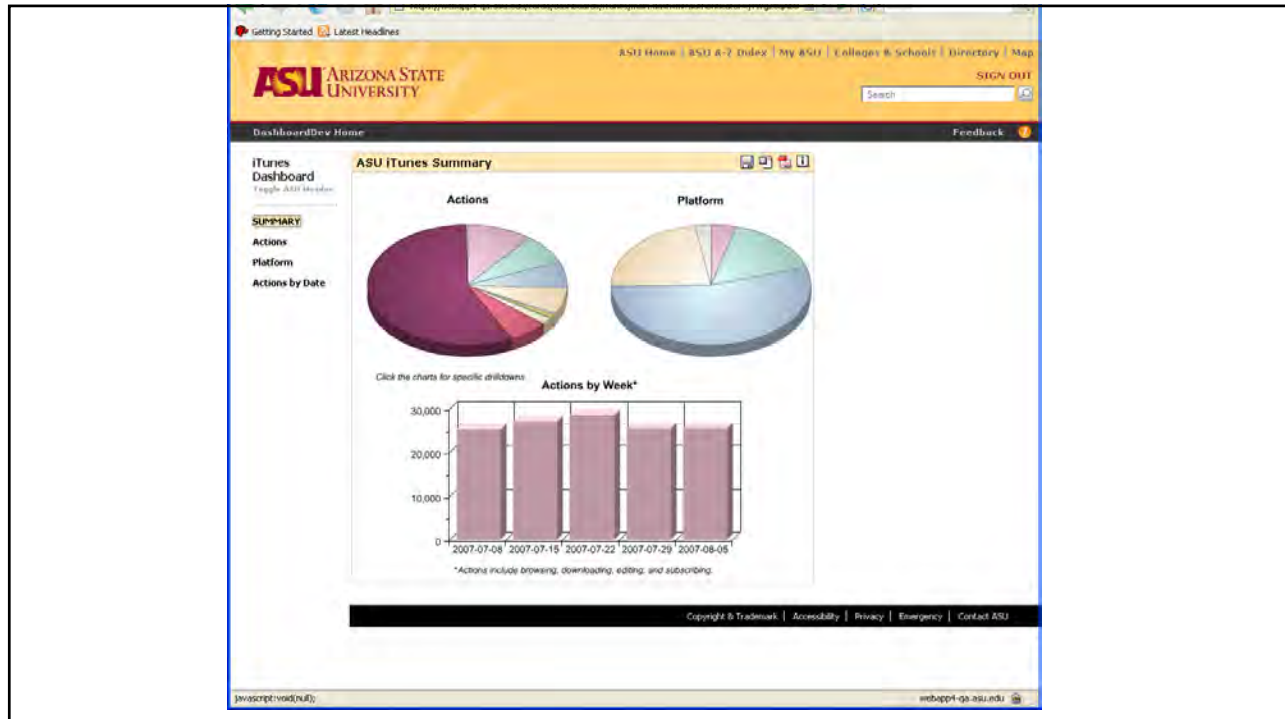




#3 Just Say NO, NO, NO to 3-D





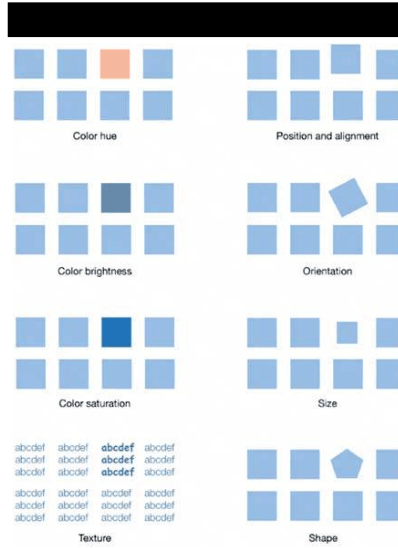


Colorblindness in the general population



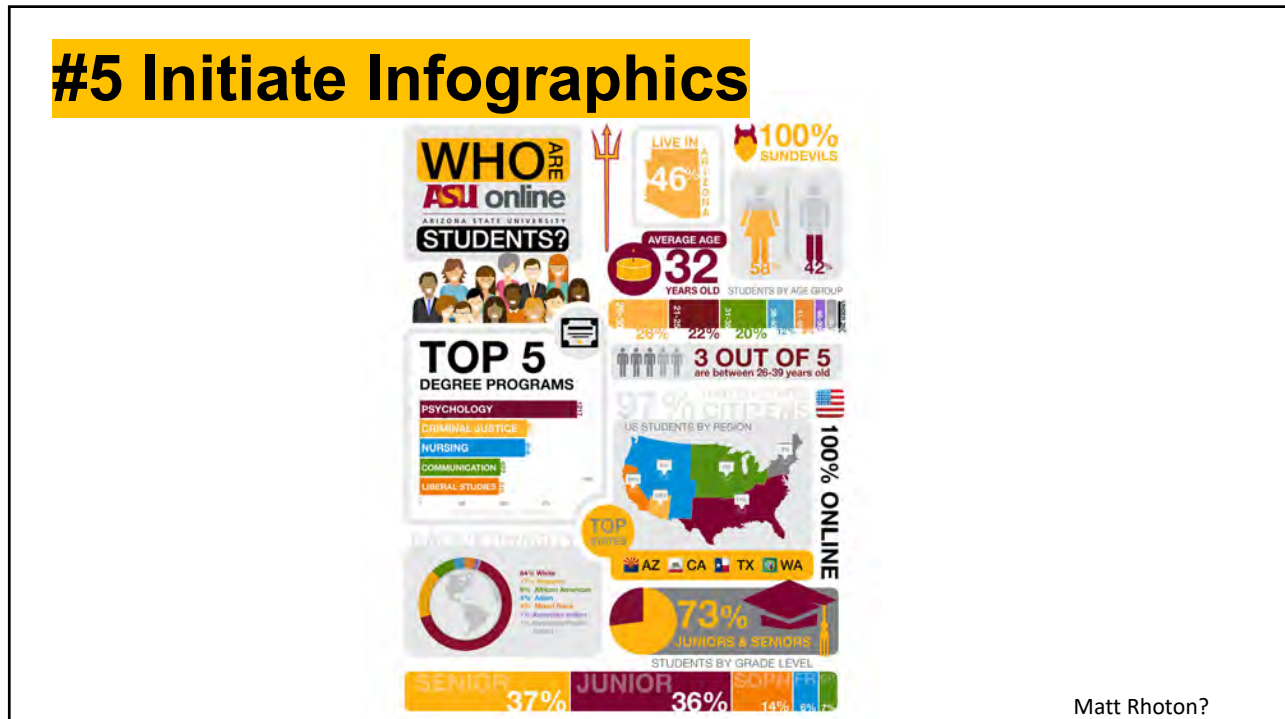
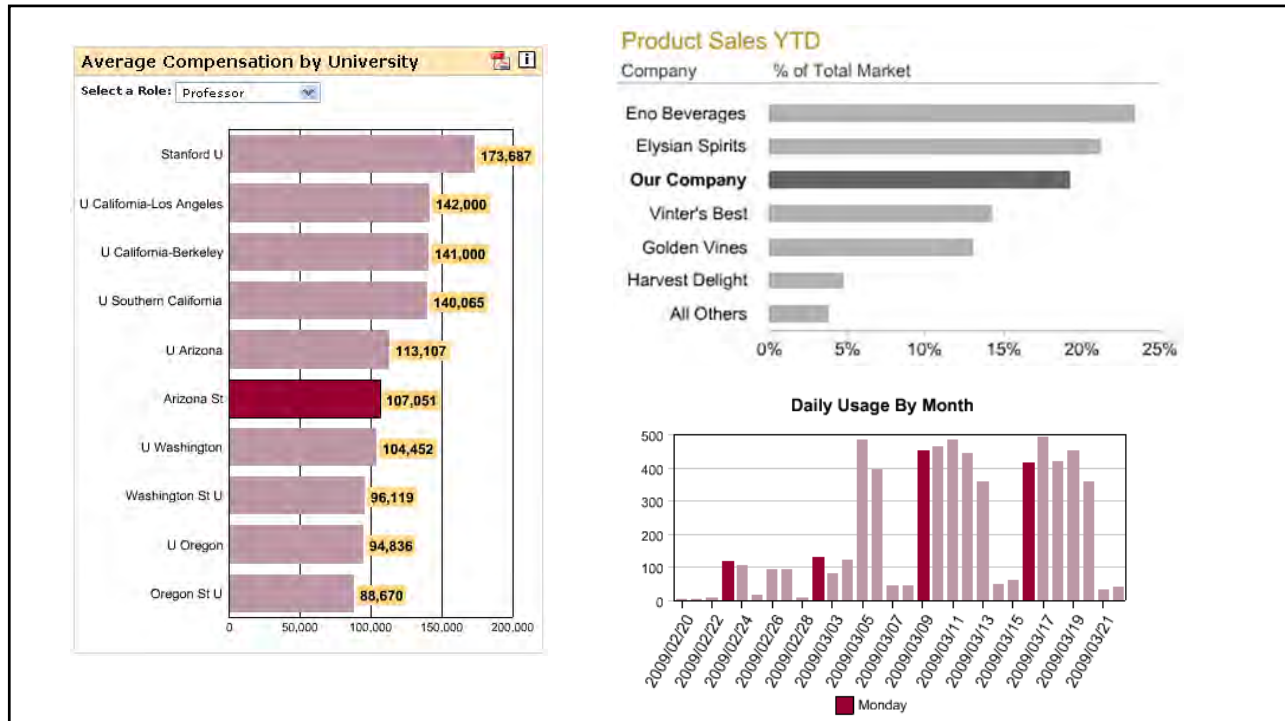
- Red/Green colorblind
- Normal eyesight
- Totally colorblind

#4 Pay Attention-Pre-Attentive Attributes



756395068473
 658663037576
 860372658602
 846589107830

756**3**95068473
 65866**303**7576
 860**3**72658602
 8465891078**30**



Matt Rhoton?

UTO by the Numbers Highlights FY20 Q3 Remote Resilience Edition

Remote Resilience

5,240
Courses brought online in Zoom

"I find the the interface of Zoom to be remarkably good for engagement and discussion"
links.asu.edu/zoomclass



55,528,433 ↑
Zoom meeting minutes in Q3,
418% increase from Q2

"The thing that surprised me in this reconfiguring was how many students stayed after the official class time to just chat, certainly more than after a face-to-face class"
links.asu.edu/zoomminutes

177,331 ↑
Zoom sessions (classes, meetings, webinars), 147% increase from Q2

"This has allowed, in my opinion, for us students to feel secure in our learning modality."
links.asu.edu/remotehumanity

55,000
Campus immersion students brought online in Zoom

"Dr. Bateman is doing a really great job of keeping the students engaged and connected while we transitioned to online learning"
links.asu.edu/remoteimmersion



88%
Enterprise privacy compliance gaps closed



703
ASU One Number peak users since the move to remote modalities

12,862 ↑
Slack active daily users,
7% increase from Q2

In the absence of opportunities for community members from across ASU to connect face to face, we created new digital touchpoints
links.asu.edu/slackusers

203,458 ↑
Slack daily messages,
182% increase from Q2

Colleagues have made sure to keep in touch via the "UTO Connections" channel, while parents working remotely are sharing their experiences in "Remote-Working-Live-Parenting"
links.asu.edu/slackmessages

153,970
Visits to UTO-created Remote Teaching and Learning web pages


400,000
Identities created this quarter





THE BRILLIANT MINDS OF MENSA

110,000 MEMBERS




NUMBER OF MEMBERS PER COUNTRY

UNITED STATES
UNITED KINGDOM
GERMANY
NETHERLANDS
SWEDEN
DENMARK
AUSTRALIA
SOUTH KOREA
FRANCE
BELGIUM
SWITZERLAND
INDIA
SPAIN
AUSTRIA
GREECE


AMERICAN MEMBERS WITH COLLEGE DEGREES

60%




YOUNGEST MEMBER

2 YEARS OLD




OLDEST MEMBER

102 YEARS OLD



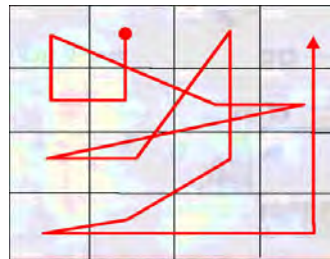
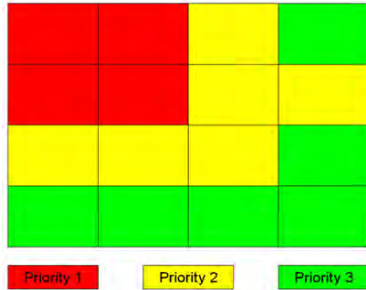
66% OF ALL MEMBERS ARE MALE



SOURCE: MENSA INTERNATIONAL CREATED BY MAGGIE ROME

Maggie Rome

#6 KPI Placement is Key



amazon WorkSpaces

Active: **402** Provisioned: **552** Deprovisioned: **12** Monthly Cost: **\$21,897** Data for February 2020

Monthly Active Users and Cost

Top 10 VP College Codes

VP College Code	Count
UNIVERSITY TECHNOLOGY OFFICE	83
BUSINESS & FINANCE TEMPE	80
SCHOOLS OF ENGINEERING	79
KNOWLEDGE ENTERPRISE DEV	51
PROVOST/STVCE PRES TEMPE	28
ENROLLMENT SERVICES	27
CLAS NATURAL SCIENCES	20
EdPlus at ASU	19
SCHOOL OF BUSINESS	18
TEACHER EDUCATION/LEADERSHIP	16

Users Deprovisioned

Provisioned Tiers

Tier	Count
Black	380
Maroon	130
Gold	
Grey	


Estimated Monthly Cost

Auto Stop	\$10
Black	\$42
Maroon	\$75
Gold	\$122
Grey	\$133

Workspaces for Analytics
 Managed desktops that house all of our analytical tools. We utilize Workspaces to help centralize data acquisition for the greater data community with platform support and a secure work environment. The Black, Maroon, and Gold tiers offer different resources and Grey is for custom usage. Inactive users are deprovisioned after 90 days. Any of the 4 tiers can be set to Auto Stop which makes them less expensive, but they take longer to start up. Less active users are set to Auto Stop to keep the average costs low.

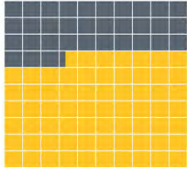
More about Workspaces
 Amazon Workspaces is a managed, secure Desktop-as-a-Service (DaaS) solution. You can use Amazon Workspaces to provision either Windows or Linux desktops in just a few minutes and quickly scale to provide thousands of desktops to workers across the globe. You can pay either monthly or hourly, just for the Workspaces you launch, which helps you save money when compared to traditional desktops and on-premises VDI solutions. Amazon Workspaces helps you eliminate the complexity in managing hardware inventory, OS versions and patches, and Virtual Desktop Infrastructure (VDI), which helps simplify your desktop delivery strategy. With Amazon Workspaces, your users get a fast, responsive desktop of their choice that they can access anywhere, anytime, from any supported device.

Steven White



Data as of March 9, 2020

Used Licenses: **132/300**

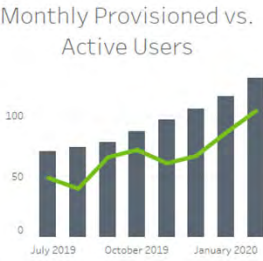


Active Gallery Users: **83**

Gallery Schedules: **85**

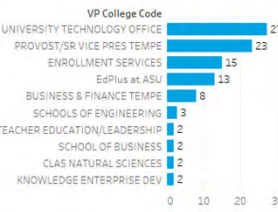
The Alteryx Gallery is a cloud-based application for publishing, sharing, and executing workflows. It communicates directly with the Alteryx Service for the management and execution of the workflows.

Monthly Provisioned vs. Active Users



Top 10 VP College Codes

(click to filter the list of users below)



VP College Code	Count
UNIVERSITY TECHNOLOGY OFFICE	27
PROVOST/SR VICE PRES TEMPE	23
ENROLLMENT SERVICES	15
EdPlus at ASU	13
BUSINESS & FINANCE TEMPE	8
SCHOOLS OF ENGINEERING	3
TEACHER EDUCATION/LEADERSHIP	2
SCHOOL OF BUSINESS	2
CLAS NATURAL SCIENCES	2
KNOWLEDGE ENTERPRISE DEV	2

VP College Code	First Name	Last Name	ASURITE	Job Title
SCHOOLS OF ENGINEERING				
	Adrienne	Buck	ajaveril	Sr Planning Analyst
	Nancy	Dickson	iacnid	Assoc Director
	Nathan	Deneau	natedog	Web Applictn Developer L...
UNIVERSITY TECHNOLOGY OFFICE				
	Allina	Salakhova	asalakho	Web Application Develop...
	Alyssa	Goldstein	aagolds1	Management Intern
	Bob	Sookvong	bis4326	Business Intelligence Dvl...
	Bryce	Manhardt	bmanhard	Student Worker III
	Dixon	Ruecker	dcruecke	Business Intelligence Ana...
	Fredrick	Hernandez	fherna1	Business Analyst Sr

Alteryx is a leader in the self-service data analytics movement with a platform that can discover, prep, and analyze all your data, then deploy and share analytics at scale for deeper insights faster than you ever thought possible.

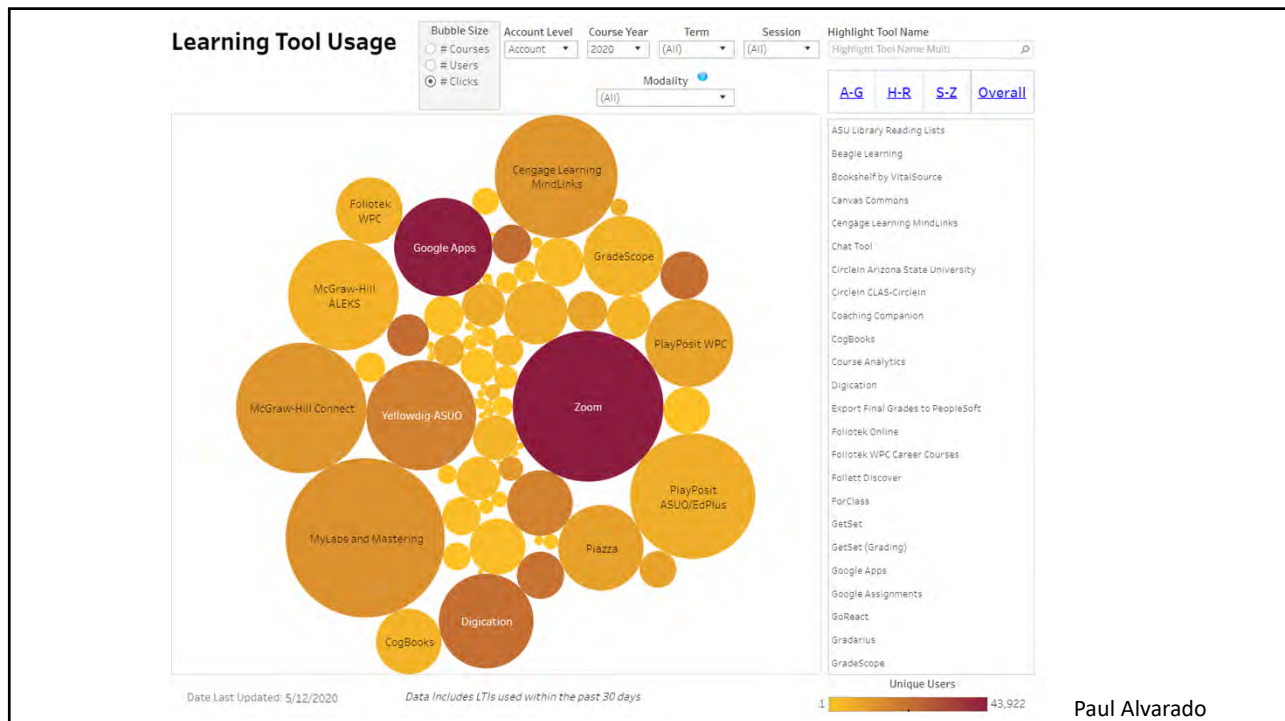
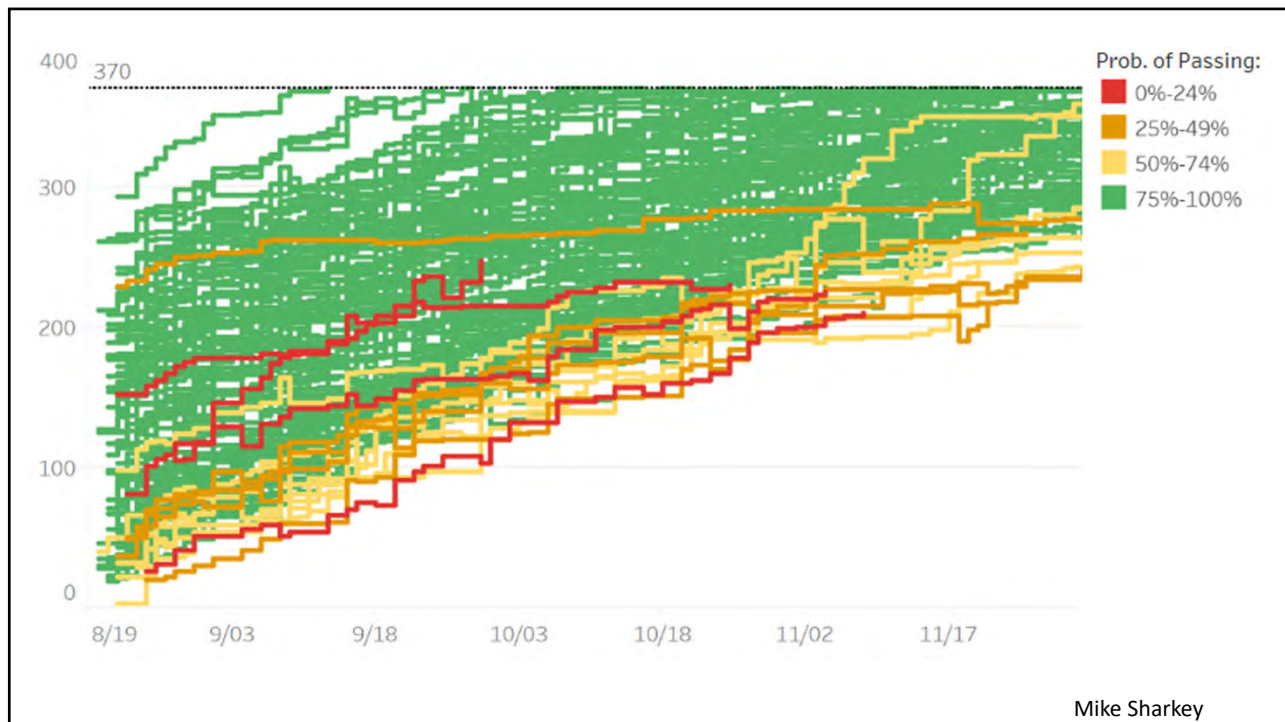
Alteryx is available within the AWS WorkSpaces upon request. ASU has experienced rapid adoption with an exited user base.

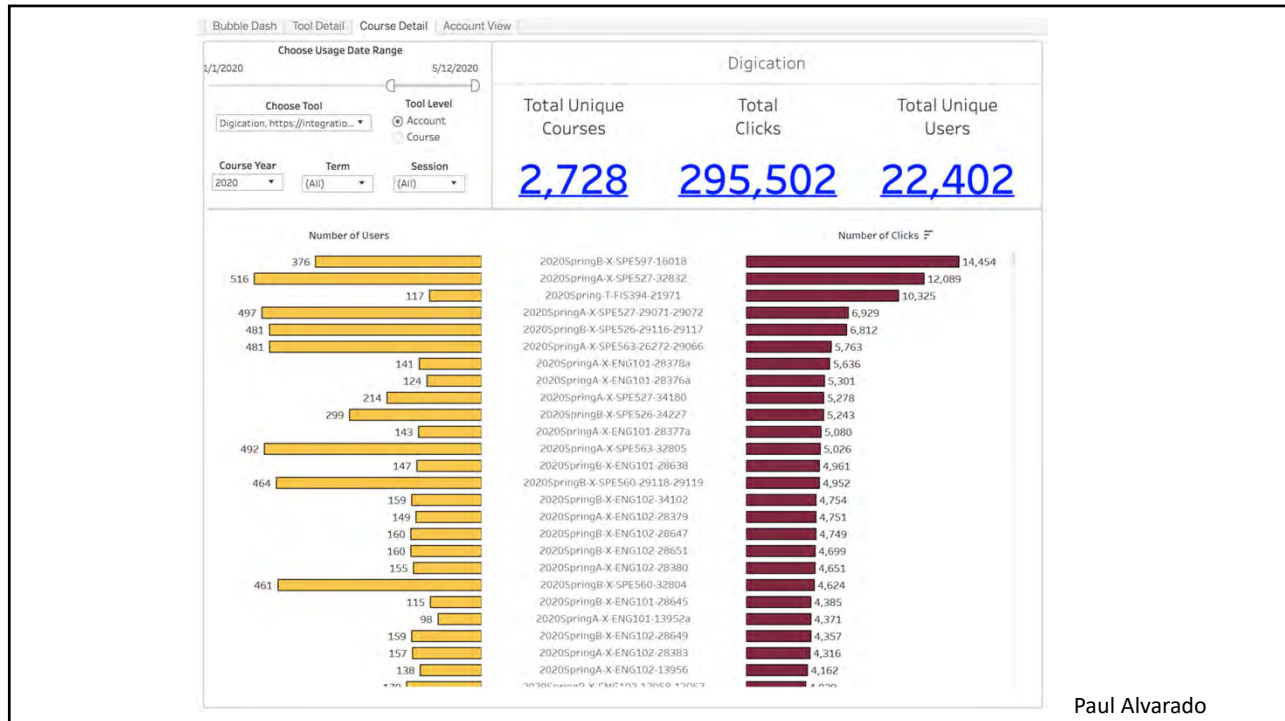
Recent use-cases include: Admissions - Master List, Enrollment & Records - Enrollment Tracking, EdPlus - API Integration

Annual Cost: FY20 \$564K, FY21 \$675K, FY22 \$777K

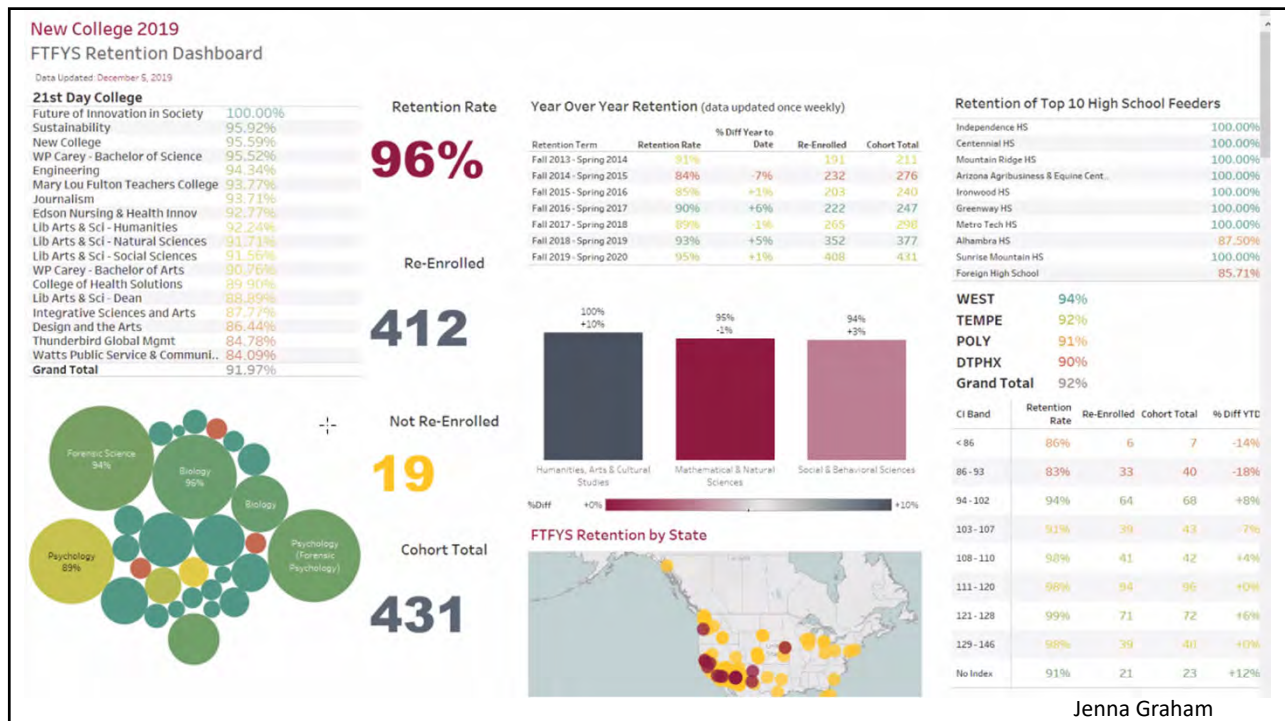
Steven White

#7 Word Clouds are the New Mullets

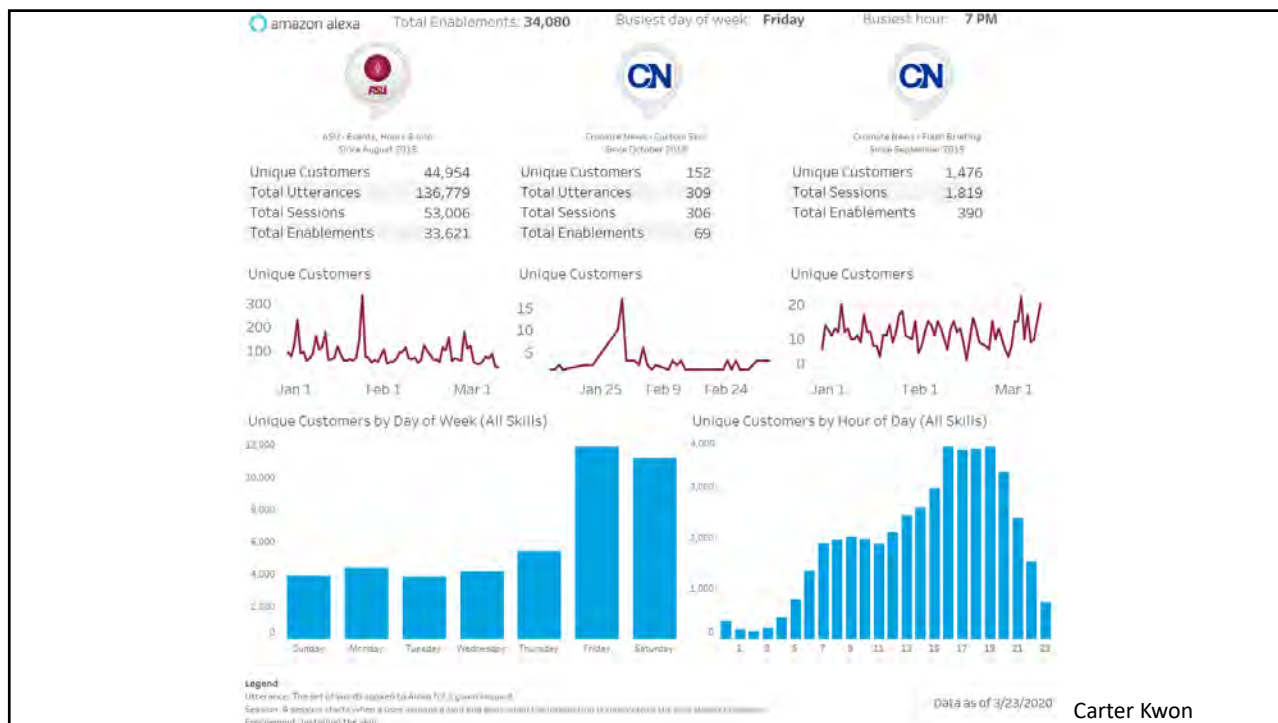
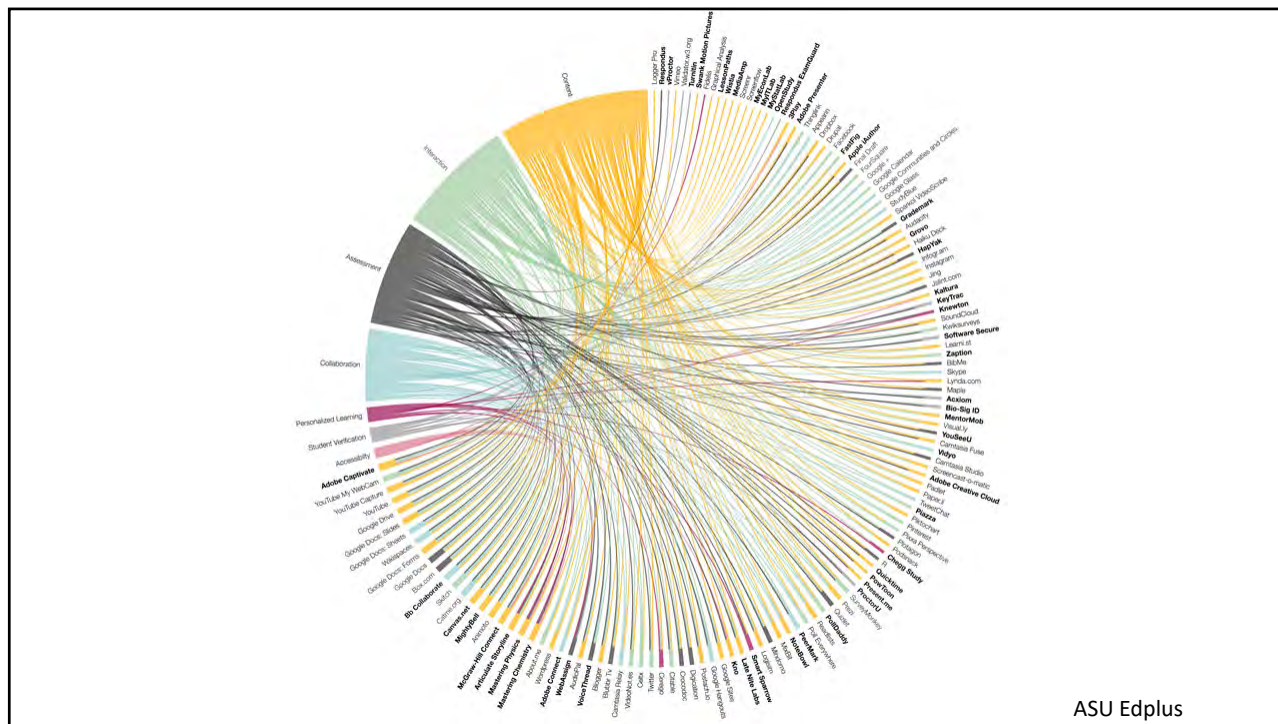




Paul Alvarado



Jenna Graham



Monthly Stats

May 2020

Logged users: **331**

Processed reports: **407**

Avg runtime: **9 minutes**

Top 10 Report Creators

0 - Fulton School of Engineering 2,712	UGA 821	Human Resources 684	Financial 651	Student 627	Carrillo, Mary A (ncarrill) 468	O-Dickson, Nancy L (ncold) 413	Enrollment 421	Ash, Karen Susan (bkusa) 344	Vasferet, James Paul (pangloss) 327
---	------------	------------------------	------------------	----------------	------------------------------------	-----------------------------------	-------------------	---------------------------------	--

Total Duplicated Reports

113,393

Total Unique Reports

69,725

Current Month Report Processing Activity

Top Engaged Users This Month		Top Used Queries This Month		Monthly Usage	
Joseph Wagner	FDM Administrative Services	Management Analyst Sr	214	ScheduleOfClasses.bqy	314
David Gondo	University Registrar Services	Office Specialist Sr	213	SubTopics4_old version.bqy	312
Eric Samples	FS Accounting	Sr Financial Services Mgr	121	HR Expenditures Workday	124
Christina Smith (RegTech)	University Registrar Services	Business Analyst Sr	99	Enrolled Students - Any Active Program - major as of today	76
Jennifer Hornsby	University Registrar Services	Director, Registrar Technical Servi	90	Class Roster - Faculty Center.bqy	51
Rebecca Klein	University Registrar Services	Asst Director	87	Students By Major Minor or Cert - run by Term and Acad Org	47
Emily McGeary	Global Launch	Data Analysis Specialist	86	BlankPSQuery.bqy	48
Jessica Wu	WPC Information Systems	Student Services Coord Sr	71	Advantage Reports - Michele	38
Dominic Bellusomo	University Registrar Services	Business Analyst	66	Schedule of Classes.bqy	37
Troy Buchanan	Admission Services	Director, Business Intelligence	63	FIX	37
Lissa Fresquez	Academic Success Programs	Course Manager	59	Students Applied to Graduate - by Term	35
Kattie Dolan	Data Strategy West	Research Analyst	58		
Stephanie Cook	WPC UPD Administration	Undergraduate Programs Coordinator,	57		

Kenvin Raymond

Data Intelligence Support

NOTE: Request Items data & Office Hours data are currently manually refreshed. Last refresh on 2020-03-27 (RITMs) and 2020-03-29 (OOH)

YTD/MTD/WTD
Year-to-Date

ASU University Technology Office
Arizona State University

Incidents

55.26% Increase
59 created this Year-to-Date
38 created previous year Year-to-Date
21 difference

4 Incidents
not resolved or closed.
Earliest was created on 2/27/20
[Log in to ServiceNow.](#)

Number of Incidents per Assignment Group this Year-to-Date

Analytics	43
Dashboards	1
Data Warehouse	1
My Reports	14
Grand Total	59

Requested Items [See Note]

26.61% Increase
1,294 opened this Year-to-Date
1,022 opened previous year Year-to-Date
272 difference

213 RITMs
not closed or canceled.
Earliest was created on 2/13/15
[Log in to ServiceNow.](#)

Requests per Catalog Item this Year-to-Date

Add Software to a BI Desktop Wor...	246
Analytics	19
Analytics - Create New Group	550
Analytics Group Access	25
Dashboard Access	1
Data Warehouse	1
My Reports	1
Reporting Data Access Request	106
Request a BI Desktop Workspace	9
Request a New Analytics User Dat...	1
Request Access or Support for AS...	1
Request Data Governance Support	1
Request Data Lake (SDU) Storage	1
Request Tableau Desktop on BI De...	17
Grand Total	1,294

Office Hours [See Note]

21.95% Increase
50 opened this Year-to-Date
41 opened previous year Year-to-Date
9 difference

8 Office Hours
not done or canceled.
Earliest was created on 1/22/20
[Log in to Jira](#)

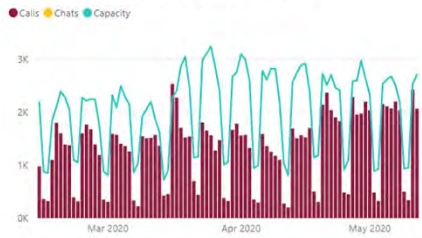
Status of Office Hours Requests this Year-to-Date

Canceled	3
Done	39
In Progress	3
Open	5
Grand Total	50

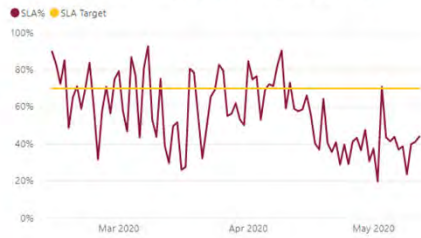
Hailey Stevens-Macfarlane

Experience Center Executive Summary

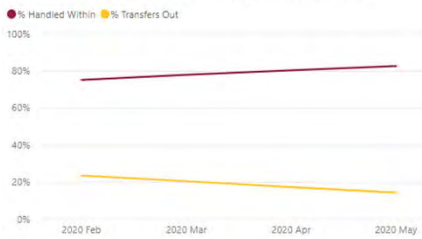
Capacity vs. Demand



Calls Answered Within 90 Seconds



% of Calls Handled by Exp. Center



of Calls Handled by Exp. Center



Volume

Offered Calls	116,013
Offered Chats	

Customer Satisfaction - Calls

Overall	4.77	★★★★★
Professionalism	4.87	★★★★★
Knowledge	4.81	★★★★★
Queue Time	4.29	★★★★☆
Issue Resolved	92.3%	
# of Surveys	10,380	
Response Rate	11.6%	

Customer Satisfaction - Chats

Overall	
Issue Resolved	
# of Surveys	
Response Rate	

Sentiment Analysis - Chats

Good Chats	
Good Chat %	
Bad Chats	
Bad Chat %	

Dixon Ruecker

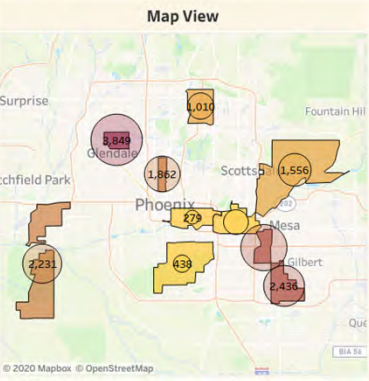
Academic Alliances - MyPath2ASU™

Data Refresh 5/5/2020

Agreement Signup Date: 1/9/2016 | Agreement Term: 4/27/2020 | Expected Start Term: (All) | Stage: (All) | Agreement Status: Active

Pathway	Count
Maricopa	17,665
Arizona - Other	1,345
Out of State	5,000

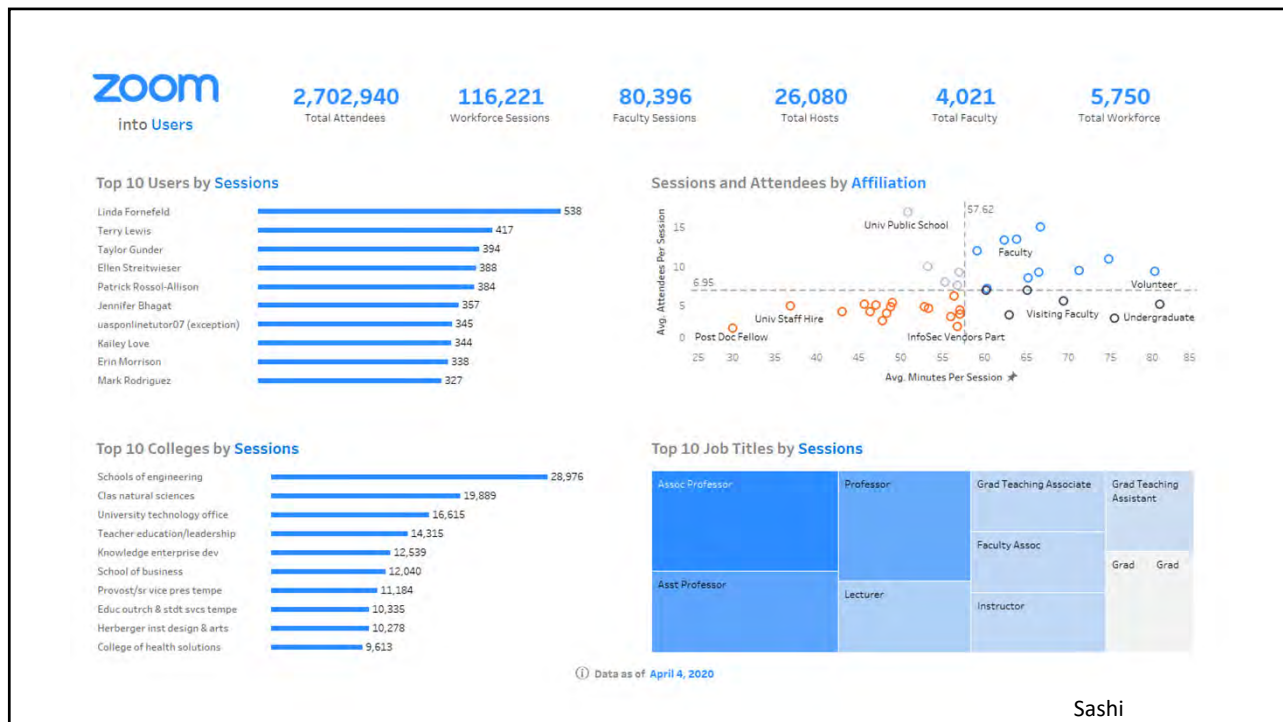
Agreement Stage					Population		Gender		
12,688	412	602	3,903	60	17,460	205	9,606	7,939	120
Prospect	Applied	Admitted	Enrolled	Other	Immersion	Online	Female	Male	Unknown



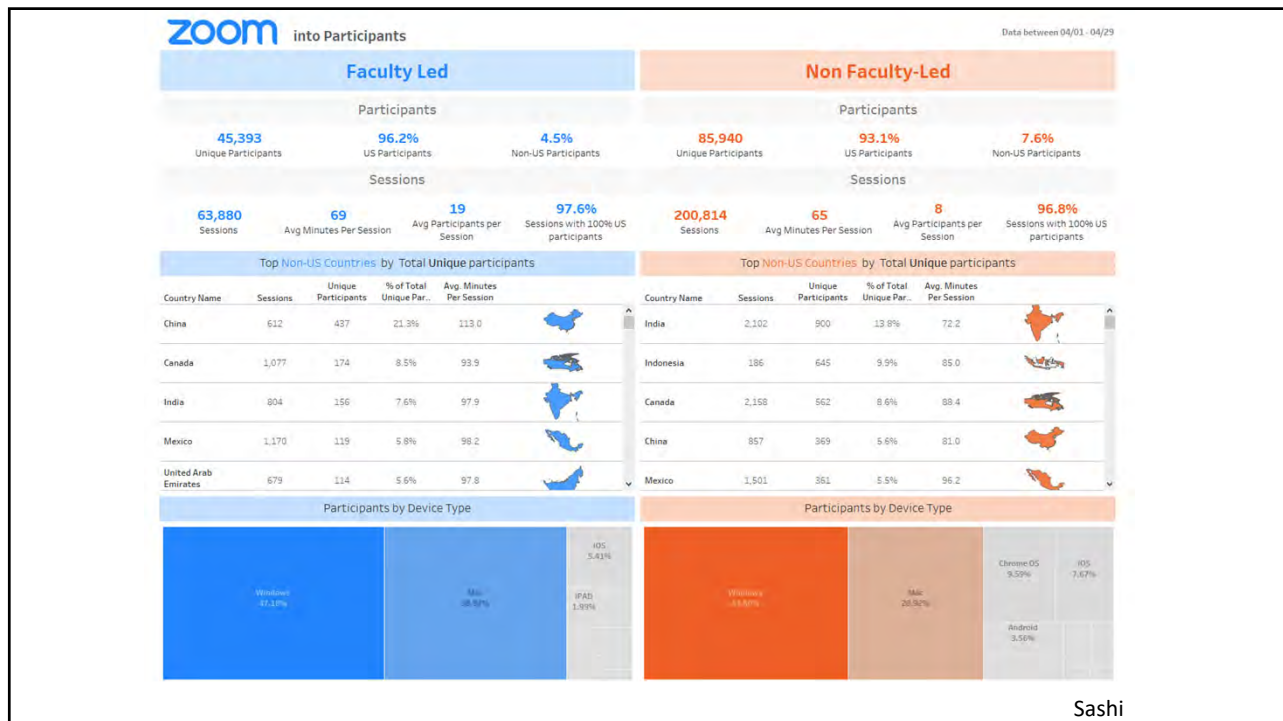
Maricopa Agreements : All

Community College	Ira A Fulton Engineering	W.P. Carey School of Business	The College of Lib Arts & Sci	MaryLouFulton Teachers College	Health Solu
Glendale Community College	745	481	433	563	
Mesa Community College	631	544	643	316	
Chandler Gilbert Community College	516	463	412	342	
Estrella Mountain Community College	478	337	292	252	
Phoenix College	266	262	336	142	
Scottsdale Community College	291	332	357	84	
Paradise Valley Community College	155	183	194	65	
Rio Salado Community College	137	226	158	68	
South Mountain Community College	99	84	67	26	
GateWay Community College	38	46	51	21	
Grand Total	3,356	2,958	2,943	1,879	

Sashi



Sashi



Sashi

#7 Word Clouds are the New Mulletts



Word clouds "mulletts" of the internet
What would Tupac say?

NOVEMBER 25, 2014 ~ MELISSA STEINER

Privacy & Cookies: This site uses cookies. By continuing to use this website, you agree to our

Digital scholarship blog

All our blogs | Latest posts | Online Resources, Guides and Bibliographies | About this blog

Search this blog

Main

Previous post | Next post

24 January 2013

"...some say word clouds are the mulletts of the internet"

This week we had the lovely and so very talented [Ma Ridge](#) over to the Library to show a room full of curators and staff from across the library the beauty (and sometimes less so) of [Data Visualisation for Analysis in Scholarly Research](#).



zeldman.com web design news & info since 1995
ISSN No. 1554-0866 made NYC USA

the daily report designing with web standards my glamorous life classics about

SEARCH designing with web standards

You might also enjoy...

A LIST APART
happy cog
WEB DESIGN, CONSULTING & PUBLISHING

DEPARTMENTS

CONTACT
CONTRAST
EXTERNAL
FAVELETS
RSS FEED

WORLD TOUR
An Event Apart Atlanta (register)
Atlanta GA USA, 3 April
SXSW Interactive (register)

12 noon edt

the new mulletts

fanny pack, the mullet, and the Macarena, the meme popularized by [Flickr](#) and [Technorati](#) is a moment cultural shame threshold. Brilliant as the fitness is choking its air supply. Damned clouds

ve been the first blogger to make the meme his



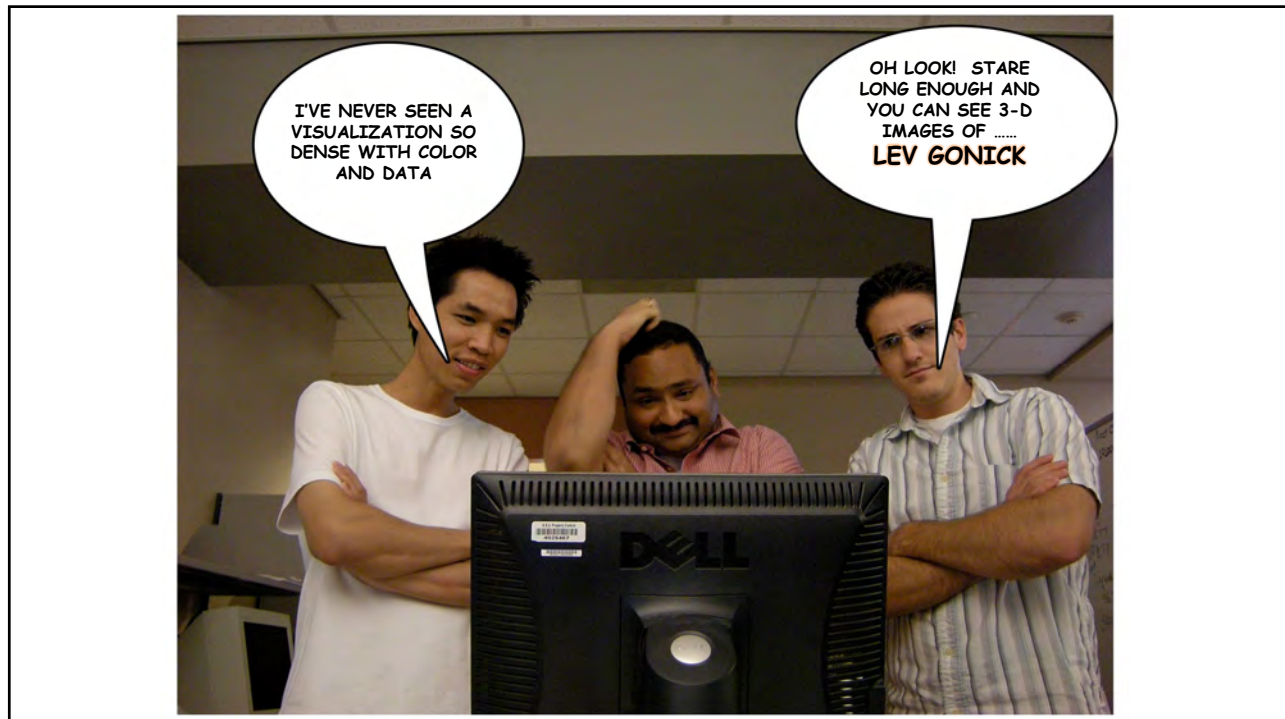
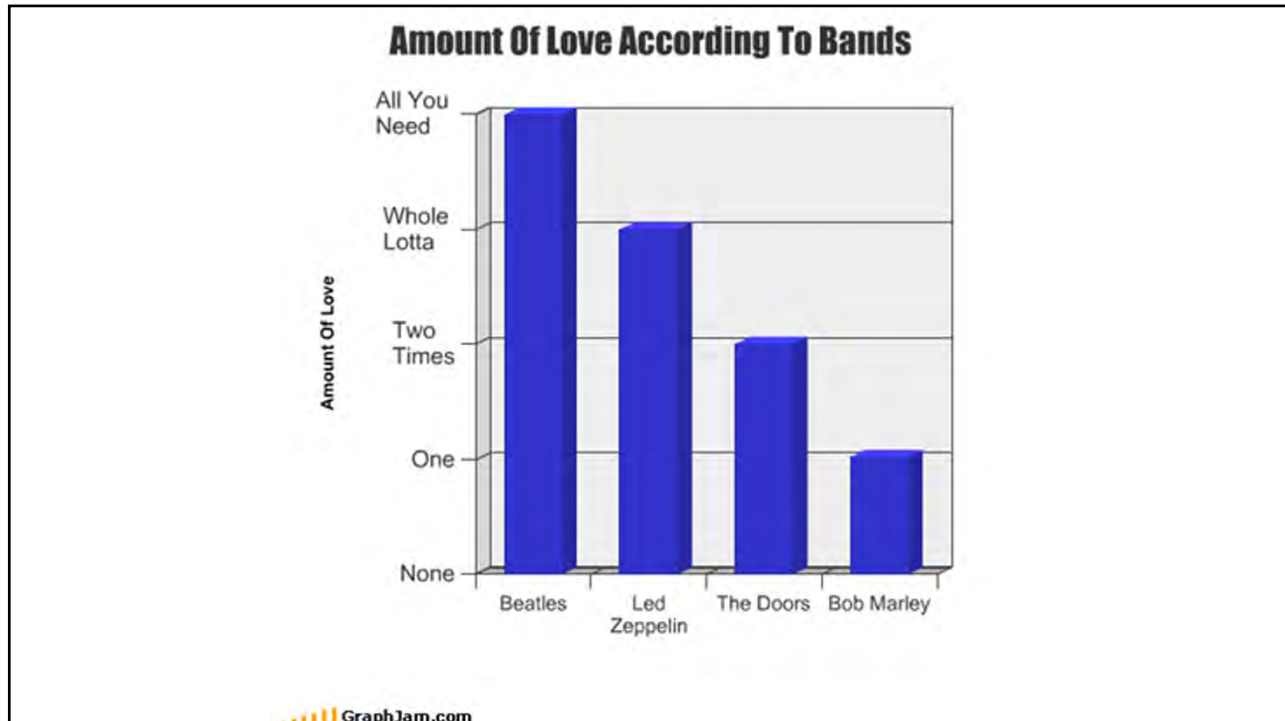


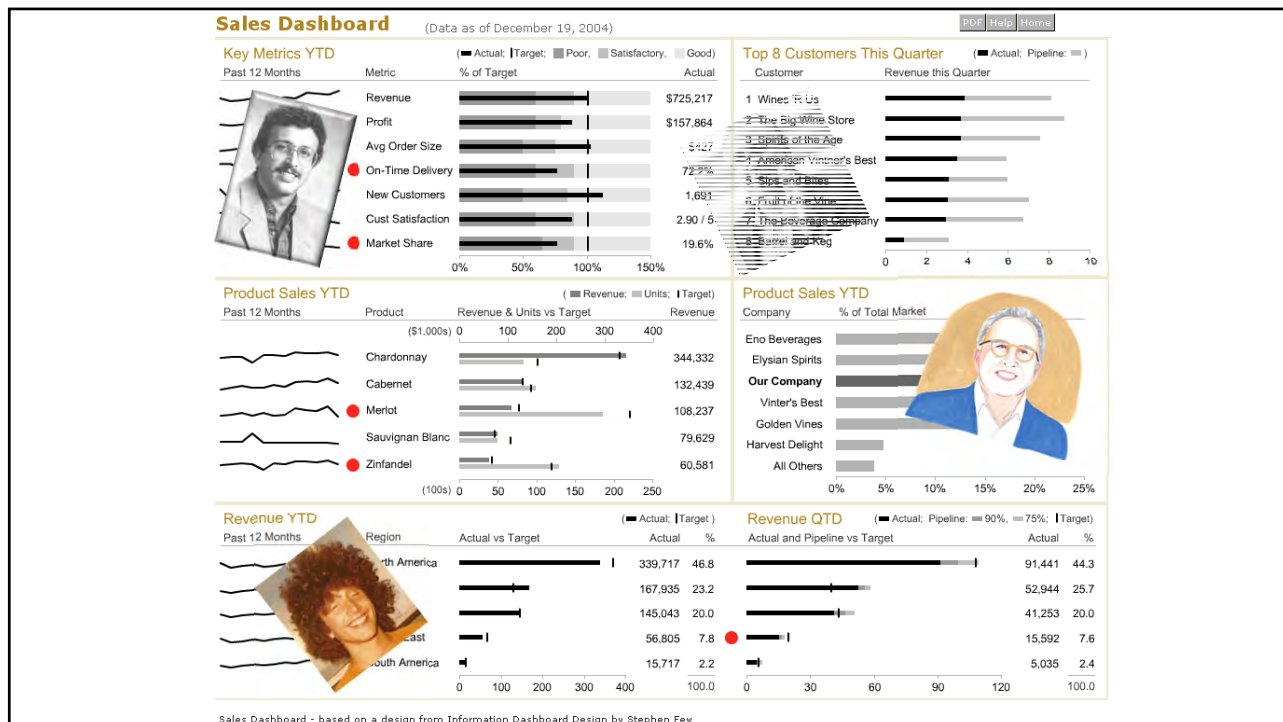
Popular colors of residential submarines



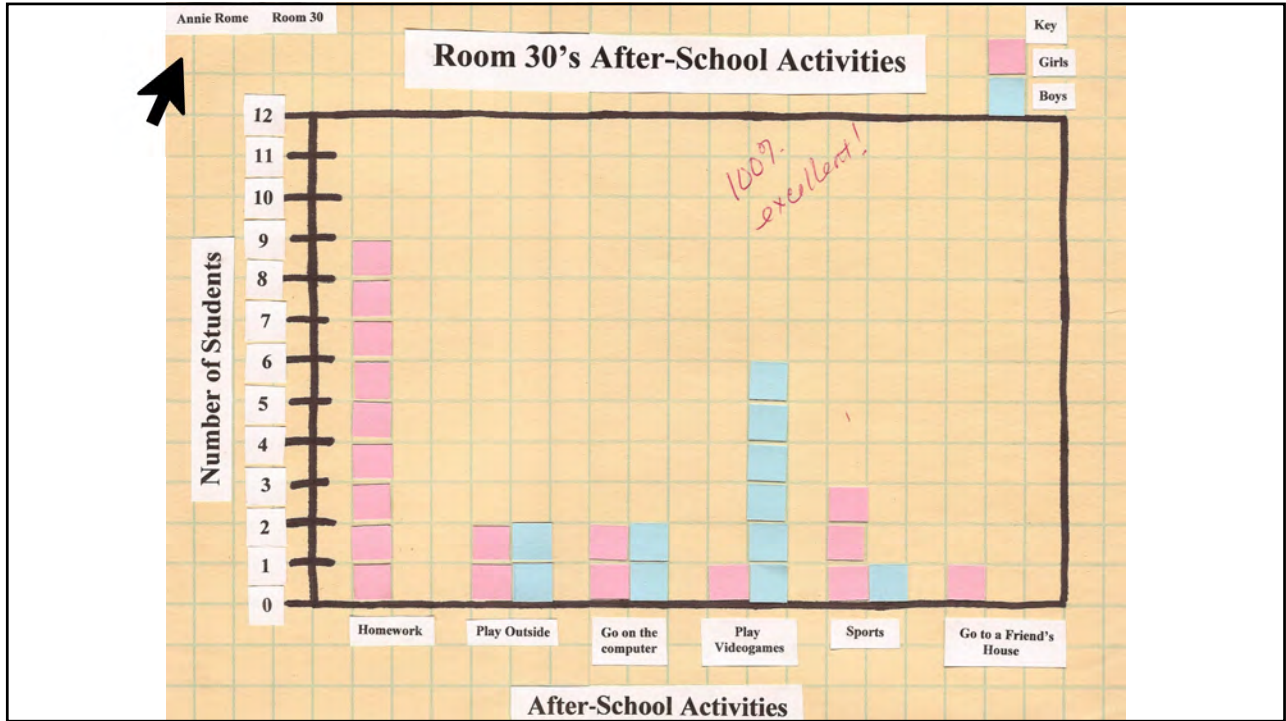
GraphJam.com







Best Viz-Dazzle I've Seen?



Interactive Breakout Sessions



- Breakout rooms will be created at random
- Reflect on the speaker's presentation/ topic and discuss take away's
- Nominate or assign someone to be the point person
- **Final Takeaway:** You can share a quote, big idea, call to action or outcome.
- Be prepared to share your main takeaways at **11:20 AM** in the plenary session

Thank you!



Session 2 starts at 10:30 AM:

- Being an Awesome Slacker
- Bringing the Classroom to Your Living Room Overnight
- Culture Ripples: Expanding the Culture of Innovation at ASU
- Insights by Role for Operating Agile - ASU Mobile App an Example
- Responsible Innovation
- Step Up Your Professional Development Game

Head to <http://links.asu.edu/EmpowerSession2> to join