

**Empower 2020**

# Responsible Innovation



**Nathan Corwin | [nathan.corwin@asu.edu](mailto:nathan.corwin@asu.edu)**

# Table of Contents

**1 Introduction**

**2 Their Rules**

**3 Our Values**

**4 Questions**

**5 Breakout**

**6 Next Steps**

“Responsible Innovation is a transparent, interactive process by which societal actors and innovators become **mutually responsive** to each other with a view to the (ethical) acceptability, sustainability and **societal desirability** of the innovation process and its marketable products.”

**René Von Schomberg**



**Their Rules**

**Governance frameworks typically focus on rules, guidelines, and norms to control input and throughput.**



Mill Ave. #100

8719

MILLION DOLLAR

301

THE MILLION DOLLAR

# Weaknesses of Rules

- Slow Responses
- Unrepresentative Processes
- No Ongoing Dialog
- Risk Focused
- Constrained Options
- Uncertain Outcomes

# **Our Values**



# ASU Charter

ASU is a **comprehensive public research university**, measured not by whom it excludes, but by whom it **includes** and how they **succeed**; advancing research and discovery of **public value**; and assuming **fundamental responsibility** for the **economic, social, cultural and overall health** of the communities it serves.



# UTO embraces

## Eight Design Aspirations

Eight **design aspirations** guide ASU's ongoing evolution as a **New American University** ASU integrates these institutional objectives in innovative ways to demonstrate excellence, accessibility and impact

- A. Enable Student Success
- B. Conduct Use-Inspired Research
- C. Fuse Intellectual Disciplines
- D. Value Entrepreneurship
- E. Leverage Our Place
- F. Be Socially Embedded
- G. Engage Globally
- H. Transform Society

# UTO Vision and Positive Core

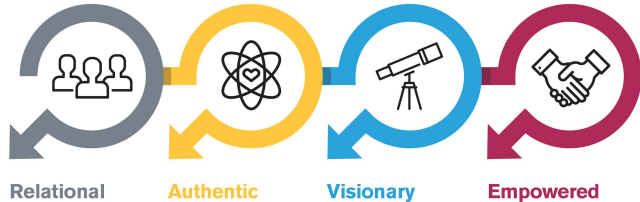
The University Technology Office embraces its role as both an **enabler** and **catalyst** for advancing the vision and work of the New American University. We are a **values-driven organization**. Our commitments are reflected in all the work we do in pursuit of **operational excellence**, **the experience and delight of our community**, and our **strategic** and **innovative initiatives**.



[View Full Positive Core »](#)

## Positive Core

Culture is foundational, which is why it's listed first. As a values-driven org, UTO created the Positive Core as our constant compass:



## Leadership Principles

Seven tenets guide us in actionizing our Positive Core and realizing ASU's vision as the New American University:

1. Agile First
2. Resourceful + Transformational
3. Talent Alignment
4. Trust in Our Teams
5. Authentic Partnerships
6. Curiosity + Creativity
7. Culture of Collaboration

[uto.asu.edu/about/core](http://uto.asu.edu/about/core)

## Empower

This ASU IT Professional Community Day convenes IT professionals from across ASU through project showcases, idea generation workshops and appreciative inquiry. [uto.asu.edu/empower](http://uto.asu.edu/empower)



## UTO Gives Back

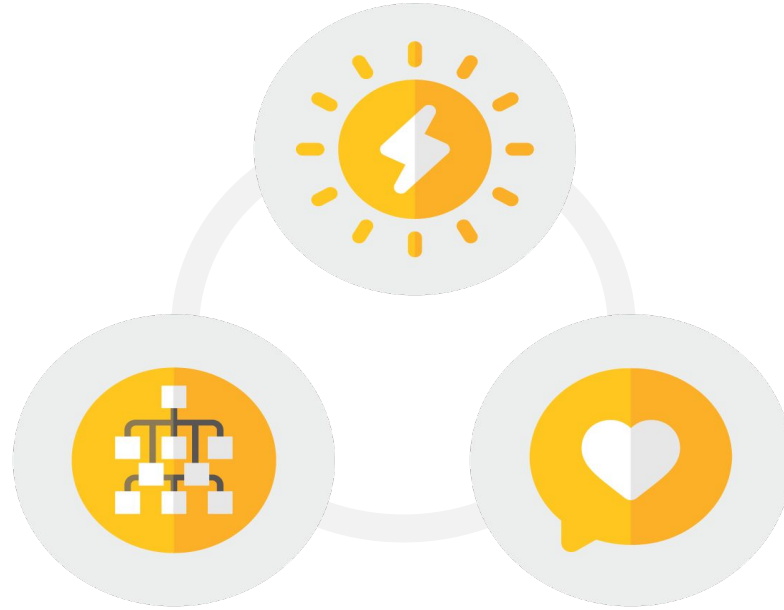
We organize more than a dozen charitable activities throughout the year, including hosting “Girls Who Code” at local schools + raising \$ for the United Way.

## Culture Ripples

A cross-ASU initiative to unite changemakers to co-design a progressive University culture, together.

# UTO Pillars

**Innovation**



**Operational  
Excellence**

**Community  
Experience &  
Delight**

Advancing an approach that anticipates and assesses the potential implications and community expectations of innovation -- with the aim to foster greater inclusivity and sustainability.

**Responsible Innovation Tactic,  
UTO 2021 Goals**



**Questions?**

# Empowering Responsibility

## What do you need?

- Enabling dialog
- Removing barriers
- Supporting action
- Structuring activity

## What about?

- Safety
- Security
- Privacy
- Transparency
- Accountability
- Conflicts
- Humans

**One Big Idea?!**

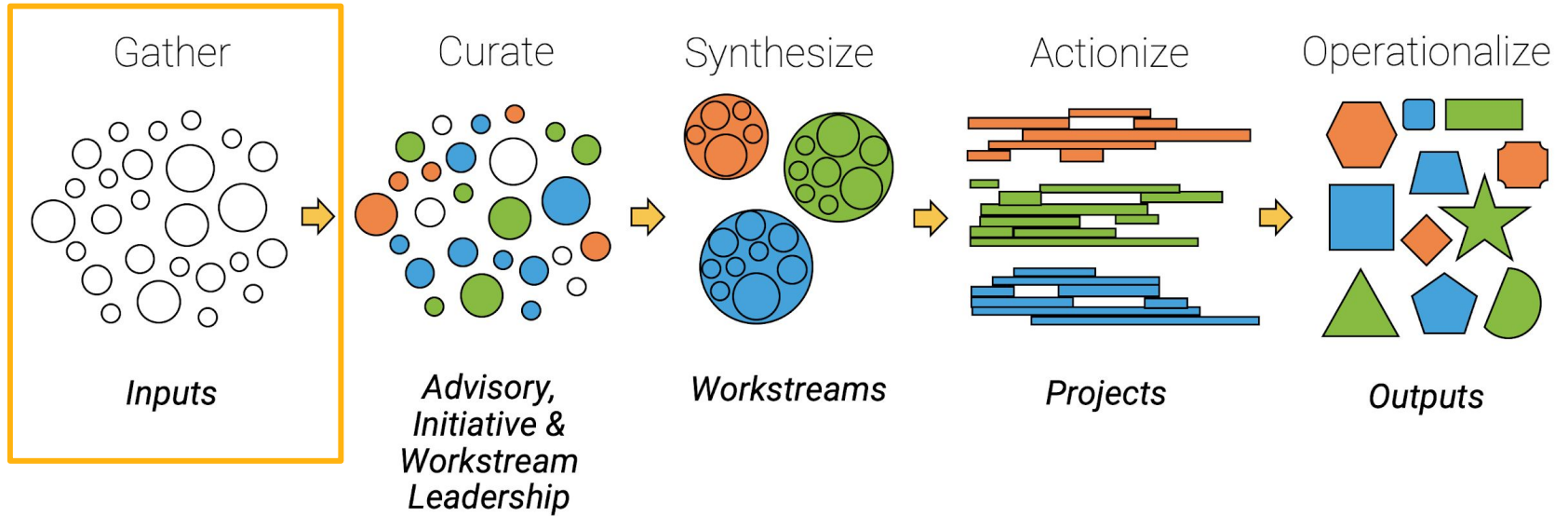


# LEARNING FUTURES COLLABORATORY

## Workstream Structure

- Call for participation
- Sign up [here](https://lfc.asu.edu) [LFC.ASU.EDU]





**Next Steps - Responsible Innovation Workstream**

**Many Thanks.**

**Questions?**



**ASU** University  
Technology Office  
Arizona State University

Nathan Corwin | [nathan.corwin@asu.edu](mailto:nathan.corwin@asu.edu)